

# Active Recombinant Full Length Human PIK3CA Protein, DDK-tagged, Biotinylated


Cat. No. PIK3CA-2229HF Lot. No. (See product label)

## SPECIFICATION

<b>Product Overview</b>	Full-length human PIK3CA[1-1068(end) amino acids and P539R of accession number NP_006209.2] was co-expressed as N-terminal DYKDDDDK tagged, biotinylated protein (128 kDa) with PIK3R1[1-724(end) amino acids of accession number NP_852664.1] using baculovirus expression system. The protein was purified by using DYKDDDDK tag antibody agarose.
<b>Species</b>	Human
<b>Source</b>	Sf21 Cells
<b>ProteinLength</b>	1-1068(end)
<b>Form</b>	50 mM Tris-HCl, 150 mM NaCl, 0.01% Brij35, 1 mM DTT, 10% glycerol, pH7.5
<b>Bio-activity</b>	The activity was determined by ADP-Glo™ Assay. The enzyme was incubated with Lipid substrate and Mg(or Mn)/ATP. The phosphorylation was detected by the ADP-Glo™ Kinase Assay technology (luminescent ADP detection assay).
<b>Purity</b>	98%
<b>Applications</b>	SDS-PAGE
<b>Storage</b>	Store at -80C. Avoid repeating freeze-thaws.

 Tel: 1-631-559-9269 1-516-512-3133

 Email: [info@creative-biomart.com](mailto:info@creative-biomart.com)  Fax: 1-631-938-8127

 45-1 Ramsey Road, Shirley, NY 11967, USA

**Conjugation**                      Biotin

## GENE INFORMATION

**Gene Name**                      phosphatidylinositol-4,5-bisphosphate 3-kinase catalytic subunit alpha

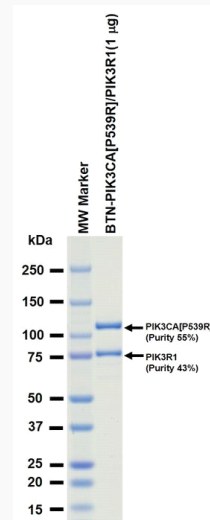
**Official Symbol**                PIK3CA

**Synonyms**                      PIK3CA;CLAPO;CLOVE;CWS5;MCAP;MCM;MCMTC;PI3K;PI3K-alpha;p110-alpha

**Protein Refseq**                [NP\\_006209.2](#)

**UniProt ID**                      [P42336](#)

## SDS-PAGE



The purity was assessed by SDS-PAGE/CBB staining.

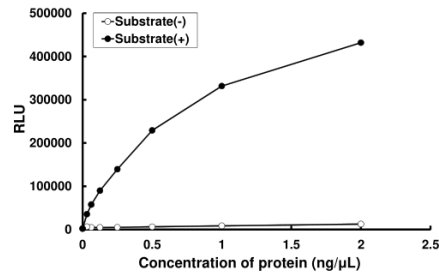
 Tel: 1-631-559-9269    1-516-512-3133

 Email: [info@creative-biomart.com](mailto:info@creative-biomart.com)     Fax: 1-631-938-8127

 45-1 Ramsey Road, Shirley, NY 11967, USA

## Activity data

## Activity data



The activity was determined by ADP-Glo™ Assay. The enzyme was incubated with Lipid substrate and Mg(or Mn)/ATP. The phosphorylation was detected by the ADP-Glo™ Kinase Assay technology (luminescent ADP detection assay).

Tel: 1-631-559-9269 1-516-512-3133

Email: [info@creative-biomart.com](mailto:info@creative-biomart.com) Fax: 1-631-938-8127

45-1 Ramsey Road, Shirley, NY 11967, USA