

## Recombinant Human PIK3CA Protein (Asn345-Phe550), N-His tagged

Cat. No. PIK3CA-4896H    Lot. No. (See product label)

### SPECIFICATION

<b>Product Overview</b>	Recombinant human PIK3CA (Asn345-Phe550) fused with the N-His tag was expressed in E. coli.
<b>Species</b>	Human
<b>Source</b>	E.coli
<b>ProteinLength</b>	Asn345-Phe550
<b>Form</b>	Lyophilized powder/frozen liquid
<b>Molecular Mass</b>	25.74 kDa
<b>Purity</b>	>90% as determined by SDS-PAGE.
<b>Notes</b>	For research use only.
<b>Storage</b>	Use a manual defrost freezer and avoid repeated freeze thaw cycles. Store at 2 to 8 centigrade for one week. Store at -20 to -80 centigrade for twelve months from the date of receipt.
<b>Storage Buffer</b>	0.01M PBS, pH 7.4, 0.02% NLS
<b>Reconstitution</b>	Reconstitute in sterile water for a stock solution.

 Tel: 1-631-559-9269    1-516-512-3133

 Email: [info@creative-biomart.com](mailto:info@creative-biomart.com)     Fax: 1-631-938-8127

 45-1 Ramsey Road, Shirley, NY 11967, USA

**Shipping** They are shipped out with dry ice/blue ice unless customers require otherwise.

## GENE INFORMATION

**Gene Name** PIK3CA phosphoinositide-3-kinase, catalytic, alpha polypeptide [ Homo sapiens (human) ]

**Official Symbol** PIK3CA

**Synonyms** PIK3CA; phosphoinositide-3-kinase, catalytic, alpha polypeptide; phosphatidylinositol-4,5-bisphosphate 3-kinase catalytic subunit alpha isoform; PI3K; PI3K-alpha; PI3-kinase p110 subunit alpha; ptdIns-3-kinase subunit p110-alpha; serine/threonine protein kinase PIK3CA; phosphatidylinositol 3-kinase, catalytic, 110-KD, alpha; phosphatidylinositol 3-kinase, catalytic, alpha polypeptide; phosphatidylinositol-4,5-bisphosphate 3-kinase 110 kDa catalytic subunit alpha; phosphatidylinositol-4,5-bisphosphate 3-kinase catalytic subunit, alpha isoform; p110-alpha; MGC142161; MGC142163;

**Gene ID** 5290

**mRNA Refseq** NM\_006218

**Protein Refseq** NP\_006209

**MIM** 171834

**UniProt ID** P42336

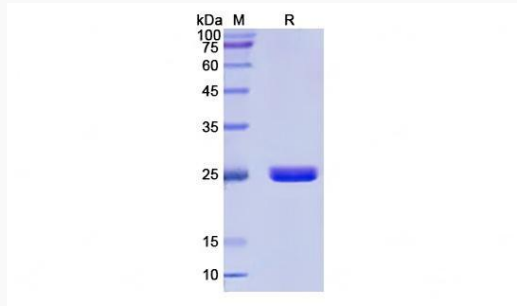
 Tel: 1-631-559-9269 1-516-512-3133

 Email: [info@creative-biomart.com](mailto:info@creative-biomart.com)  Fax: 1-631-938-8127

 45-1 Ramsey Road, Shirley, NY 11967, USA



SDS-PAGE



Tel: 1-631-559-9269 1-516-512-3133

Email: [info@creative-biomart.com](mailto:info@creative-biomart.com) Fax: 1-631-938-8127

45-1 Ramsey Road, Shirley, NY 11967, USA