

Active Recombinant Full Length Human PIK3CA Protein, GST-tagged

Cat. No. PIK3CA-7972HF **Lot. No.** (See product label)

SPECIFICATION

Product Overview	Full-length human PIK3CA[1-1068(end) amino acids of accession number NP_006209.2] was co- expressed as N-terminal GST-fusion protein (151 kDa) with PIK3R1[1-724(end) amino acids of accession number NP_852664.1] using baculovirus expression system. GST-PIK3CA/PIK3R1 was purified by using glutathione sepharose chromatography.
Species	Human
Source	Sf21 Cells
ProteinLength	1-1068(end)
Form	50 mM Tris-HCl, 150 mM NaCl, 0.01% Brij35, 1 mM DTT, 10% glycerol, pH7.5
Bio-activity	The activity was determined by ADP-Glo™ Assay. The enzyme was incubated with Lipid substrate and Mg(or Mn)/ATP. The phosphorylation was detected by the ADP-Glo™ Kinase Assay technology (luminescent ADP detection assay).
Purity	90%
Applications	SDS-PAGE
Storage	Store at -80C. Avoid repeating freeze-thaws.

 Tel: 1-631-559-9269 1-516-512-3133

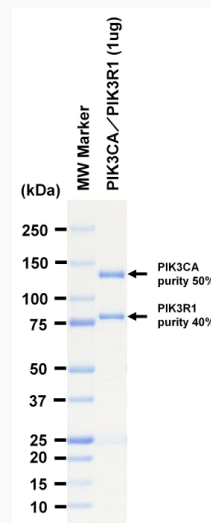
 Email: info@creative-biomart.com  Fax: 1-631-938-8127

 45-1 Ramsey Road, Shirley, NY 11967, USA

GENE INFORMATION

Gene Name	phosphatidylinositol-4,5-bisphosphate 3-kinase catalytic subunit alpha
Official Symbol	PIK3CA
Synonyms	PIK3CA;CLAPO;CLOVE;CWS5;MCAP;MCM;MCMTC;PI3K;PI3K-alpha;p110-alpha
Protein Refseq	NP_006209.2
UniProt ID	P42336

SDS-PAGE



The purity was assessed by SDS-PAGE/CBB staining.

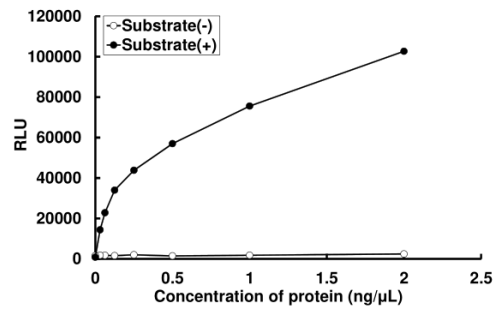
Tel: 1-631-559-9269 1-516-512-3133

Email: info@creative-biomart.com Fax: 1-631-938-8127

45-1 Ramsey Road, Shirley, NY 11967, USA

Activity data

Activity data



The activity was determined by ADP-Glo™ Assay. The enzyme was incubated with Lipid substrate and Mg(or Mn)/ATP. The phosphorylation was detected by the ADP-Glo™ Kinase Assay technology (luminescent ADP detection assay).

Tel: 1-631-559-9269 1-516-512-3133

Email: info@creative-biomart.com Fax: 1-631-938-8127

45-1 Ramsey Road, Shirley, NY 11967, USA