

Active Recombinant Full Length Human PIK3CA Protein, DDK-tagged, Biotinylated

Cat. No. PIK3CA-9713HF Lot. No. (See product label)

SPECIFICATION

Product Overview Full-length human PIK3CA[1-1068(end) amino acids and R88Q of accession number NP_006209.2] was co-expressed as N-terminal DYKDDDDK tagged, biotinylated protein (128 kDa) with PIK3R1[1-724(end) amino acids of accession number NP_852664.1] using baculovirus expression system. The protein was purified by using DYKDDDDK tag antibody agarose.

Species Human

Source Sf21 Cells

ProteinLength 1-1068(end)

Form 50 mM Tris-HCl, 150 mM NaCl, 0.01% Brij35, 1 mM DTT, 10% glycerol, pH7.5

Bio-activity The activity was determined by ADP-Glo™ Assay. The enzyme was incubated with Lipid substrate and Mg(or Mn)/ATP. The phosphorylation was detected by the ADP-Glo™ Kinase Assay technology (luminescent ADP detection assay).


Purity 99%

Applications SDS-PAGE

Storage Store at -80C. Avoid repeating freeze-thaws.

 Tel: 1-631-559-9269 1-516-512-3133

 Email: info@creative-biomart.com  Fax: 1-631-938-8127

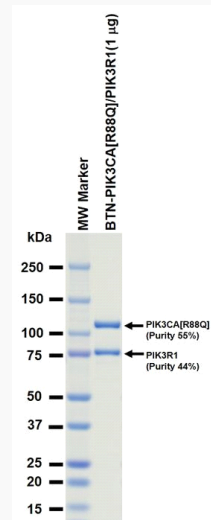
 45-1 Ramsey Road, Shirley, NY 11967, USA

Conjugation Biotin

GENE INFORMATION

Gene Name	phosphatidylinositol-4,5-bisphosphate 3-kinase catalytic subunit alpha
Official Symbol	PIK3CA
Synonyms	PIK3CA;CLAPO;CLOVE;CWS5;MCAP;MCM;MCMTC;PI3K;PI3K-alpha;p110-alpha
Protein Refseq	NP_006209.2
UniProt ID	P42336

SDS-PAGE

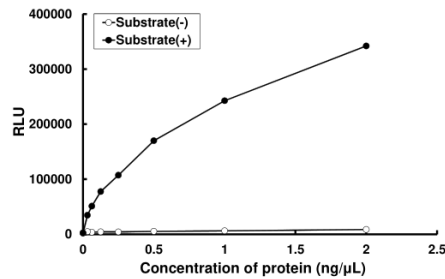


The purity was assessed by SDS-PAGE/CBB staining.

 Tel: 1-631-559-9269 1-516-512-3133

 Email: info@creative-biomart.com  Fax: 1-631-938-8127

 45-1 Ramsey Road, Shirley, NY 11967, USA

Activity data**Activity data**

The activity was determined by ADP-Glo™ Assay. The enzyme was incubated with Lipid substrate and Mg(or Mn)/ATP. The phosphorylation was detected by the ADP-Glo™ Kinase Assay technology (luminescent ADP detection assay).

Tel: 1-631-559-9269 1-516-512-3133

Email: info@creative-biomart.com Fax: 1-631-938-8127

45-1 Ramsey Road, Shirley, NY 11967, USA