

# Active Recombinant Full Length Human PIK3CB Protein, DDK-tagged, Biotinylated

Cat. No. PIK3CB-1810HF Lot. No. (See product label)

## SPECIFICATION

<b>Product Overview</b>	Full-length human PIK3CB[1-1070(end) amino acids of accession number NP_006210.1] was co- expressed as N-terminal DYKDDDDK tagged, biotinylated protein (126 kDa) with PIK3R1[1-724(end) amino acids of accession number NP_852664.1] (84kDa) using baculovirus expression system. The protein was purified by using DYKDDDDK tag antibody agarose.
<b>Species</b>	Human
<b>Source</b>	Sf21 Cells
<b>ProteinLength</b>	1-1070(end)
<b>Form</b>	50 mM Tris-HCl, 150 mM NaCl, 0.01% Brij35, 1 mM DTT, 10% glycerol, pH7.5
<b>Bio-activity</b>	The activity was determined by ADP-Glo™ Assay. The enzyme was incubated with Lipid substrate and Mg(or Mn)/ATP. The phosphorylation was detected by the ADP-Glo™ Kinase Assay technology (luminescent ADP detection assay).
<b>Purity</b>	94%
<b>Applications</b>	SDS-PAGE
<b>Storage</b>	Store at -80C. Avoid repeating freeze-thaws.

 Tel: 1-631-559-9269 1-516-512-3133

 Email: [info@creative-biomart.com](mailto:info@creative-biomart.com)  Fax: 1-631-938-8127

 45-1 Ramsey Road, Shirley, NY 11967, USA

**Conjugation**                      Biotin

## GENE INFORMATION

**Gene Name**                      phosphoinositide-3-kinase, catalytic, beta polypeptide

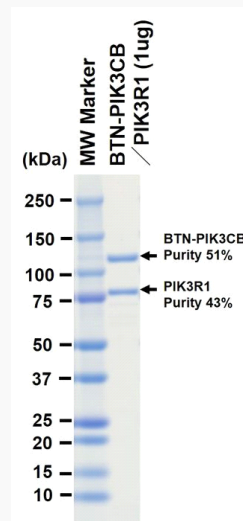
**Official Symbol**                PIK3CB

**Synonyms**                      PIK3CB;P110BETA;PI3K;PI3KBETA;PIK3C1;phosphatidylinositol-4;5-bisphosphate;3-kinase;catalytic;subunit;beta;phosphoinositide-3-kinase;catalytic;beta;polypeptide

**Protein Refseq**                [NP\\_006210.1](#)

**UniProt ID**                      [P42338](#)

## SDS-PAGE



The purity was assessed by SDS-PAGE/CBB staining.

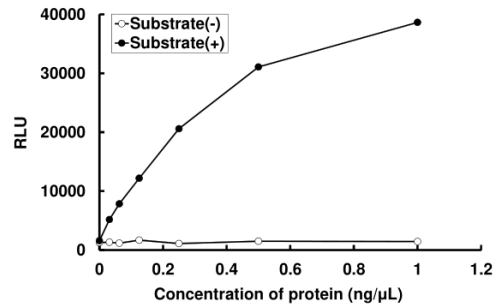
 Tel: 1-631-559-9269    1-516-512-3133

 Email: [info@creative-biomart.com](mailto:info@creative-biomart.com)     Fax: 1-631-938-8127

 45-1 Ramsey Road, Shirley, NY 11967, USA

Activity data

Activity data



The activity was determined by ADP-Glo™ Assay. The enzyme was incubated with Lipid substrate and Mg(or Mn)/ATP. The phosphorylation was detected by the ADP-Glo™ Kinase Assay technology (luminescent ADP detection assay).

Tel: 1-631-559-9269 1-516-512-3133

Email: [info@creative-biomart.com](mailto:info@creative-biomart.com) Fax: 1-631-938-8127

45-1 Ramsey Road, Shirley, NY 11967, USA