

# Active Recombinant Full Length Human PIK3CB Protein, GST-tagged

Cat. No. PIK3CB-2278HF    Lot. No. (See product label)

## SPECIFICATION

**Product Overview** Full-length human PIK3CB[1-1070(end) amino acids of accession number NP\_006210.1] was co- expressed as N-terminal GST-fusion protein (150 kDa) with PIK3R1[1-724(end) amino acids of accession number NP\_852664.1] using baculovirus expression system. GST-PIK3CB/PIK3R1 was purified by using glutathione sepharose chromatography.

**Species** Human

**Source** Sf21 Cells

**ProteinLength** 1-1070(end)

**Form** 50 mM Tris-HCl, 150 mM NaCl, 0.01% Brij35, 1 mM DTT, 10% glycerol, pH7.5

**Bio-activity** The activity was determined by ADP-Glo™ Assay. The enzyme was incubated with Lipid substrate and Mg(or Mn)/ATP. The phosphorylation was detected by the ADP-Glo™ Kinase Assay technology (luminescent ADP detection assay).

**Purity** 90%

**Applications** SDS-PAGE

**Storage** Store at -80C. Avoid repeating freeze-thaws.

 Tel: 1-631-559-9269    1-516-512-3133

 Email: [info@creative-biomart.com](mailto:info@creative-biomart.com)     Fax: 1-631-938-8127

 45-1 Ramsey Road, Shirley, NY 11967, USA

## GENE INFORMATION

**Gene Name** phosphoinositide-3-kinase, catalytic, beta polypeptide

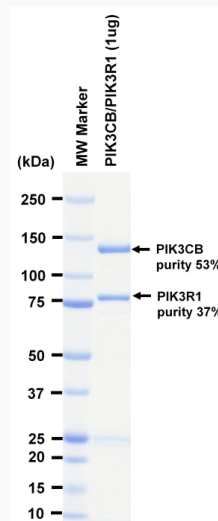
**Official Symbol** PIK3CB

**Synonyms** PIK3CB;P110BETA;PI3K;PI3KBETA;PIK3C1;phosphatidylinositol-4;5-bisphosphate;3-kinase;catalytic;subunit;beta;phosphoinositide-3-kinase;catalytic;beta;polypeptide


**Protein Refseq** [NP\\_006210.1](#)

**UniProt ID** [P42338](#)


## SDS-PAGE



The purity was assessed by SDS-PAGE/CBB staining.

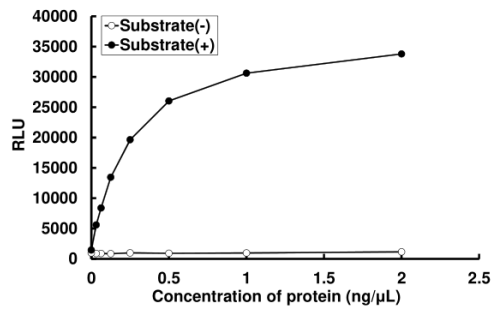
 Tel: 1-631-559-9269 1-516-512-3133

 Email: [info@creative-biomart.com](mailto:info@creative-biomart.com)  Fax: 1-631-938-8127

 45-1 Ramsey Road, Shirley, NY 11967, USA

Activity data

Activity data



The activity was determined by ADP-Glo™ Assay. The enzyme was incubated with Lipid substrate and Mg(or Mn)/ATP. The phosphorylation was detected by the ADP-Glo™ Kinase Assay technology (luminescent ADP detection assay).

Tel: 1-631-559-9269 1-516-512-3133

Email: [info@creative-biomart.com](mailto:info@creative-biomart.com) Fax: 1-631-938-8127

45-1 Ramsey Road, Shirley, NY 11967, USA