

# Recombinant Human PIK3CB Protein (Met152-Val349), N-His tagged

**Cat. No.** PIK3CB-4897H    **Lot. No.** (See product label)

## SPECIFICATION

<b>Product Overview</b>	Recombinant human PIK3CB / p110beta (Met152-Val349) fused with the N-His tag was expressed in E. coli.
<b>Species</b>	Human
<b>Source</b>	E.coli
<b>ProteinLength</b>	Met152-Val349
<b>Form</b>	Lyophilized powder/frozen liquid
<b>Molecular Mass</b>	25.31 kDa
<b>Purity</b>	>90% as determined by SDS-PAGE.
<b>Notes</b>	For research use only.
<b>Storage</b>	Use a manual defrost freezer and avoid repeated freeze thaw cycles. Store at 2 to 8 centigrade for one week. Store at -20 to -80 centigrade for twelve months from the date of receipt.
<b>Storage Buffer</b>	0.01M PBS, pH 7.4, 0.02% NLS
<b>Reconstitution</b>	Reconstitute in sterile water for a stock solution.

 Tel: 1-631-559-9269    1-516-512-3133

 Email: [info@creative-biomart.com](mailto:info@creative-biomart.com)     Fax: 1-631-938-8127

 45-1 Ramsey Road, Shirley, NY 11967, USA

**Shipping** They are shipped out with dry ice/blue ice unless customers require otherwise.

## GENE INFORMATION

**Gene Name** PIK3CB phosphoinositide-3-kinase, catalytic, beta polypeptide [ Homo sapiens (human) ]

**Official Symbol** PIK3CB

**Synonyms** PIK3CB; phosphoinositide-3-kinase, catalytic, beta polypeptide; PIK3C1; phosphatidylinositol-4,5-bisphosphate 3-kinase catalytic subunit beta isoform; PI3K-beta; PtdIns-3-kinase p110; PI3-kinase subunit beta; PI3-kinase p110 subunit beta; ptdIns-3-kinase subunit beta; ptdIns-3-kinase subunit p110-beta; phosphatidylinositol-4,5-bisphosphate 3-kinase 110 kDa catalytic subunit beta; PI3K; P110BETA; PI3KBETA; MGC133043; DKFZp779K1237;

**Gene ID** 5291

**mRNA Refseq** NM\_001256045

**Protein Refseq** NP\_001242974

**MIM** 602925

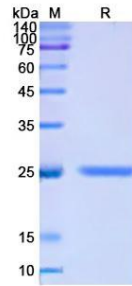
**UniProt ID** P42338

 Tel: 1-631-559-9269 1-516-512-3133

 Email: [info@creative-biomart.com](mailto:info@creative-biomart.com)  Fax: 1-631-938-8127

 45-1 Ramsey Road, Shirley, NY 11967, USA

**SDS-PAGE**



 Tel: 1-631-559-9269 1-516-512-3133

 Email: [info@creative-biomart.com](mailto:info@creative-biomart.com)  Fax: 1-631-938-8127

 45-1 Ramsey Road, Shirley, NY 11967, USA