

Active Recombinant Full Length Human PIK3CD Protein, DDK-tagged, Biotinylated

Cat. No. PIK3CD-1687HF Lot. No. (See product label)

SPECIFICATION

Product Overview	Full-length human PIK3CD[1-1044(end) amino acids of accession number NP_005017.3] was co- expressed as N-terminal DYKDDDDK tagged, biotinylated protein (123 kDa) with PIK3R1[1-724(end) amino acids of accession number NP_852664.1] (84kDa) using baculovirus expression system. The protein was purified by using DYKDDDDK tag antibody agarose.
Species	Human
Source	Sf21 Cells
ProteinLength	1-1044(end)
Form	50 mM Tris-HCl, 150 mM NaCl, 0.01% Brij35, 1 mM DTT, 10% glycerol, pH7.5
Bio-activity	The activity was determined by ADP-Glo™ Assay. The enzyme was incubated with Lipid substrate and Mg(or Mn)/ATP. The phosphorylation was detected by the ADP-Glo™ Kinase Assay technology (luminescent ADP detection assay).
Purity	97%
Applications	SDS-PAGE
Storage	Store at -80C. Avoid repeating freeze-thaws.

 Tel: 1-631-559-9269 1-516-512-3133

 Email: info@creative-biomart.com  Fax: 1-631-938-8127

 45-1 Ramsey Road, Shirley, NY 11967, USA

Conjugation Biotin

GENE INFORMATION

Gene Name phosphatidylinositol-4,5-bisphosphate 3-kinase catalytic subunit delta

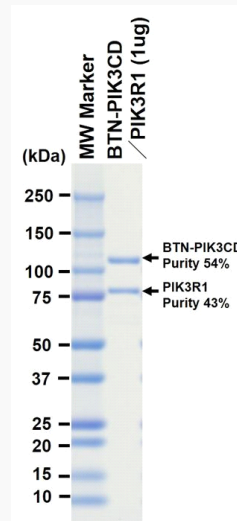
Official Symbol PIK3CD

Synonyms PIK3CD;APDS;IMD14;P110DELTA;PI3K;p110D;phosphatidylinositol;3-kinase;catalytic;delta;polypeptide;phosphoinositide-3-kinase;C

Protein Refseq [NP_005017.3](#)

UniProt ID [O00329](#)

SDS-PAGE



The purity was assessed by SDS-PAGE/CBB staining.

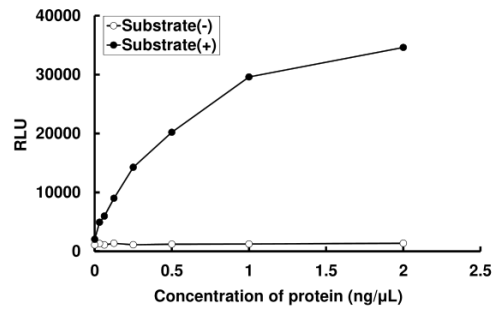
 Tel: 1-631-559-9269 1-516-512-3133

 Email: info@creative-biomart.com  Fax: 1-631-938-8127

 45-1 Ramsey Road, Shirley, NY 11967, USA

Activity data

Activity data



The activity was determined by ADP-Glo™ Assay. The enzyme was incubated with Lipid substrate and Mg(or Mn)/ATP. The phosphorylation was detected by the ADP-Glo™ Kinase Assay technology (luminescent ADP detection assay).

Tel: 1-631-559-9269 1-516-512-3133

Email: info@creative-biomart.com Fax: 1-631-938-8127

45-1 Ramsey Road, Shirley, NY 11967, USA