

Recombinant Human PINK1 protein, GST-tagged

Cat. No. PINK1-5743H **Lot. No.** (See product label)

SPECIFICATION

Product Overview	Recombinant Human PINK1 protein(336-581 aa), fused with N-terminal GST tag, was expressed in E.coli.
Species	Human
Source	E.coli
ProteinLength	336-581 aa
Form	The purified protein was lyophilized from sterile phosphate-buffered saline (PBS: 58 mM Na ₂ HPO ₄ , 17 mM NaH ₂ PO ₄ , 68 mM NaCl, pH 8.0). Prior to lyophilization, 5% (w/v) trehalose and 5% (w/v) mannitol were incorporated as cryoprotective excipients.
AASequence	PRLAAMMLLQLLEGVDHLVQQGIAHRDLKSDNILVELDPDGCPWLVIADFGCCLADE SIGLQLPFSSWYVDRGGNGCLMAPEVSTARPGPRAVIDYSKADAWAVGAIAYEIFGL VNPFGQGKAHLESRSYQEAQLPALPESVPPDVRQLVRALLQREASKRPSARVAAN VLHLSLWGEHILALKNLKLDKMGVWLLQQSAATLLANRLTEKCCVETKMKMLFLANL ECETLCQAALLLCSWRAAL
Purity	80%, by SDS-PAGE with Coomassie Brilliant Blue staining.
Storage	Store at 2-8°C for 1-2 weeks. Aliquot and store at -20°C to -80°C for up to 3 months, reconstitution with sterile water and addition of an equal volume of glycerol. Avoid repeat freeze-thaw cycles.

 Tel: 1-631-559-9269 1-516-512-3133

 Email: info@creative-biomart.com  Fax: 1-631-938-8127

 45-1 Ramsey Road, Shirley, NY 11967, USA

Reconstitution

Dissolve the product in 200 µl sterile water to achieve a working concentration of 0.25 g/µl. If experimental compatibility allows, mix the aqueous solution with an equal volume of glycerol (1:1 ratio) after initial reconstitution.

GENE INFORMATION**Gene Name**

PINK1 PTEN induced putative kinase 1 [Homo sapiens]

Official Symbol

PINK1

Synonyms

PINK1; PTEN induced putative kinase 1; PARK6, Parkinson disease (autosomal recessive) 6; serine/threonine-protein kinase PINK1, mitochondrial; protein kinase BRPK; PTEN-induced putative kinase protein 1; BRPK; PARK6; FLJ27236;

Gene ID

65018

mRNA Refseq

NM_032409

Protein Refseq

NP_115785

MIM

608309

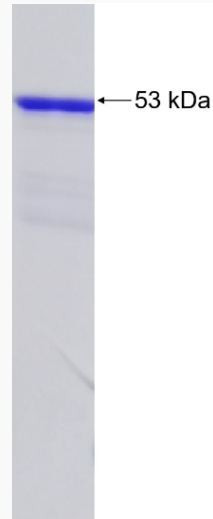
UniProt ID

Q9BXM7

 Tel: 1-631-559-9269 1-516-512-3133 Email: info@creative-biomart.com  Fax: 1-631-938-8127 45-1 Ramsey Road, Shirley, NY 11967, USA



SDS-PAGE



Tel: 1-631-559-9269 1-516-512-3133

Email: info@creative-biomart.com Fax: 1-631-938-8127

45-1 Ramsey Road, Shirley, NY 11967, USA