

Native Human PIP Protein (118 aa)

Cat. No. PIP-20H Lot. No. (See product label)

SPECIFICATION

Product Overview	Native protein isolated from pooled human seminal plasma, protein identity confirmed by LC-MS/MS.
Species	Human
Source	Seminal plasma
ProteinLength	118 aa
Description	Enables IgG binding activity; aspartic-type endopeptidase activity; and identical protein binding activity. Involved in several processes, including detection of chemical stimulus involved in sensory perception of bitter taste; negative regulation of T cell apoptotic process; and proteolysis. Located in extracellular space and nucleus.
Molecular Mass	13.52 kDa
AA Sequence	QDNTRKIIK NFDIPKSVRPNDEVTA VLAVQTELKECMVVKTYLISS IPLQGAFNYKYTA CLCDDNPKTFYWDFYTNRTVQIAAVVDVIRELGICPDDAAVIPIKNNRFYTIEILKVE
Endotoxin	< 1.0 EU/μg
Purity	>95%
Applications	Western blotting, ELISA, Cell culture and/or animal studies, Immunological methods

 Tel: 1-631-559-9269 1-516-512-3133

 Email: info@creative-biomart.com  Fax: 1-631-938-8127

 45-1 Ramsey Road, Shirley, NY 11967, USA

Quality Control Test	<p>BCA to determine quantity of the protein.</p> <p>SDS PAGE to determine purity of the protein.</p> <p>LAL to determine quantity of endotoxin.</p>
Notes	<p>All samples used for protein preparation were tested and found negative for HBsAg, HIV1,2, HCV, syphilis, aHBc, RRR. Since no test can absolutely assure the absence of all infectious agents, this product should be handled as a potential biohazard. This product is intended for research use only.</p>
Storage	<p>Store the lyophilized protein at –80 centigrade. Lyophilized protein remains stable until the expiry date when stored at –80 centigrade. Aliquot reconstituted protein to avoid repeated freezing/thawing cycles and store at –80 centigrade for long term storage. Reconstituted protein can be stored at 4 centigrade for a week.</p>
Storage Buffer	<p>Filtered (0.4 µm) and lyophilized in 0.5 mg/mL in 0.05M phosphate buffer, 0.075M NaCl, pH 8.0.</p>
Reconstitution	<p>Add deionized water to prepare a working stock solution of approximately 0.5 mg/mL and let the lyophilized pellet dissolve completely. Product is not sterile! Please filter the product by an appropriate sterile filter before using it in the cell culture.</p>
Shipping	<p>At ambient temperature.</p>

GENE INFORMATION

Gene Name	PIP prolactin induced protein [Homo sapiens (human)]
Official Symbol	PIP
Synonyms	PIP; prolactin induced protein; GPIP4; BRST-2; GCDFP15; GCDFP-15; prolactin-inducible protein; SABP; apocrine; gross cystic disease fluid protein 15; secretory

 Tel: 1-631-559-9269 1-516-512-3133

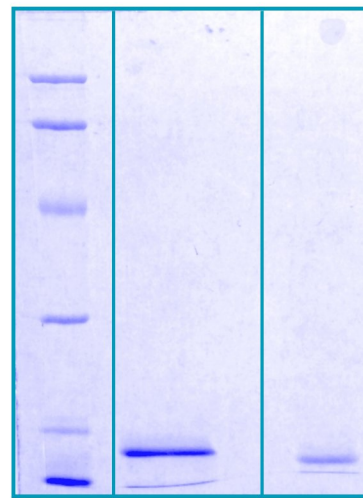
 Email: info@creative-biomart.com  Fax: 1-631-938-8127

 45-1 Ramsey Road, Shirley, NY 11967, USA

actin-binding protein

Gene ID 5304**mRNA Refseq** NM_002652**Protein Refseq** NP_002643**MIM** 176720**UniProt ID** P12273

**SDS-PAGE analysis
of Prolactin-
Inducible Protein
native protein, 12%
gel stained with
Coomassie Brilliant
Blue G250.**



M.W. marker-14, 21, 31, 45, 66, 97 kDa
reduced and boiled sample, 2.5 µg/lane
non-reduced and non-boiled sample, 2.5 µg/lane

 Tel: 1-631-559-9269 1-516-512-3133

 Email: info@creative-biomart.com  Fax: 1-631-938-8127

 45-1 Ramsey Road, Shirley, NY 11967, USA