

## Recombinant Human PIP4K2A Protein (Met1-Thr406), C-His tagged

Cat. No. PIP4K2A-4912H Lot. No. (See product label)

### SPECIFICATION

<b>Product Overview</b>	Recombinant human PIP4K2A (Met1-Thr406) fused with the C-terminal His tag was expressed in Mammalian cells.
<b>Species</b>	Human
<b>Source</b>	Mammalian Cells
<b>ProteinLength</b>	Met1-Thr406
<b>Form</b>	Lyophilized powder/frozen liquid
<b>Molecular Mass</b>	44.66 kDa
<b>Purity</b>	>90% as determined by SDS-PAGE.
<b>Notes</b>	For research use only.
<b>Storage</b>	Use a manual defrost freezer and avoid repeated freeze thaw cycles. Store at 2 to 8 centigrade for one week. Store at -20 to -80 centigrade for twelve months from the date of receipt.
<b>Storage Buffer</b>	Supplied as solution form in PBS or lyophilized from PBS.
<b>Reconstitution</b>	Reconstitute in sterile water for a stock solution.

 Tel: 1-631-559-9269 1-516-512-3133

 Email: [info@creative-biomart.com](mailto:info@creative-biomart.com)  Fax: 1-631-938-8127

 45-1 Ramsey Road, Shirley, NY 11967, USA

**Shipping** They are shipped out with dry ice/blue ice unless customers require otherwise.

## GENE INFORMATION

**Gene Name** [PIP4K2A phosphatidylinositol-5-phosphate 4-kinase, type II, alpha \[ Homo sapiens \(human\) \]](#)

**Official Symbol** [PIP4K2A](#)

**Synonyms** PIP4K2A; phosphatidylinositol-5-phosphate 4-kinase, type II, alpha; phosphatidylinositol 4 phosphate 5 kinase, type II, alpha, PIP5K2A; phosphatidylinositol-5-phosphate 4-kinase type-2 alpha; PIP5KIIA; PIP5KIIalpha; PIP5KIII; PIP4KII-alpha; PI (5) P 4-kinase type II alpha; PtdIns (4) P-5-kinase B isoform; ptdIns (4) P-5-kinase C isoform; diphosphoinositide kinase 2-alpha; ptdIns (5) P-4-kinase isoform 2-alpha; 1-phosphatidylinositol-4-phosphate kinase; 1-phosphatidylinositol-4-phosphate-5-kinase; 1-phosphatidylinositol-5-phosphate 4-kinase 2-alpha; phosphatidylinositol-4-phosphate 5-kinase, type II, alpha; type II phosphatidylinositol-4-phosphate 5-kinase 53 K isoform; PIPK; PI5P4KA; PIP5K2A; FLJ13267; PIP5KII-alpha;

**Gene ID** [5305](#)

**mRNA Refseq** [NM\\_005028](#)

**Protein Refseq** [NP\\_005019](#)

**MIM** [603140](#)

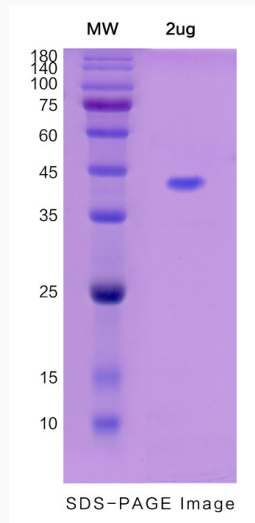
**UniProt ID** [P48426](#)

 Tel: 1-631-559-9269 1-516-512-3133

 Email: [info@creative-biomart.com](mailto:info@creative-biomart.com)  Fax: 1-631-938-8127

 45-1 Ramsey Road, Shirley, NY 11967, USA

**SDS-PAGE**



 Tel: 1-631-559-9269 1-516-512-3133

 Email: [info@creative-biomart.com](mailto:info@creative-biomart.com)  Fax: 1-631-938-8127

 45-1 Ramsey Road, Shirley, NY 11967, USA