

# Active Recombinant Full Length Human PIP4K2A Protein, GST-tagged

**Cat. No.** PIP4K2A-5816HF    **Lot. No.** (See product label)

## SPECIFICATION

<b>Product Overview</b>	Full-length human PIP4K2A [1-406(end) amino acids of accession number NP_005019] was expressed as N-terminal GST-fusion protein (73 kDa) using baculovirus expression system. GST-PIP4K2A was purified by using glutathione sepharose chromatography.
<b>Species</b>	Human
<b>Source</b>	Sf21 Cells
<b>ProteinLength</b>	1-406(end)
<b>Form</b>	50 mM Tris-HCl, 150 mM NaCl, 0.01% Brij35, 1 mM DTT, 10% glycerol, pH7.5
<b>Bio-activity</b>	The activity was determined by ADP-Glo™ Assay. The enzyme was incubated with Lipid substrate and Mg(or Mn)/ATP. The phosphorylation was detected by the ADP-Glo™ Kinase Assay technology (luminescent ADP detection assay).
<b>Purity</b>	95%
<b>Applications</b>	SDS-PAGE
<b>Storage</b>	Store at -80C. Avoid repeating freeze-thaws.

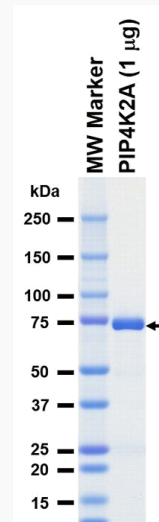
## GENE INFORMATION

 Tel: 1-631-559-9269    1-516-512-3133

 Email: [info@creative-biomart.com](mailto:info@creative-biomart.com)     Fax: 1-631-938-8127

 45-1 Ramsey Road, Shirley, NY 11967, USA

<b>Gene Name</b>	phosphatidylinositol-5-phosphate 4-kinase type 2 alpha
<b>Official Symbol</b>	PIP4K2A
<b>Synonyms</b>	PIP4K2A;PI5P4KA;PIP5K2A;PIP5KII-alpha;PIP5KIIA;PIPK;PIP5KIIalpha
<b>Protein Refseq</b>	<a href="#">NP_005019</a>
<b>UniProt ID</b>	<a href="#">P48426</a>

**SDS-PAGE**


The purity was assessed by SDS-PAGE/CBB staining.

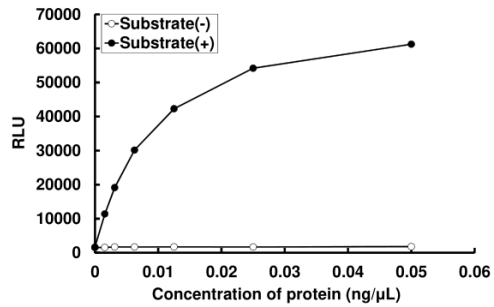
 Tel: 1-631-559-9269 1-516-512-3133

 Email: [info@creative-biomart.com](mailto:info@creative-biomart.com)  Fax: 1-631-938-8127

 45-1 Ramsey Road, Shirley, NY 11967, USA

Activity data

Activity data



The activity was determined by ADP-Glo™ Assay. The enzyme was incubated with Lipid substrate and Mg(or Mn)/ATP. The phosphorylation was detected by the ADP-Glo™ Kinase Assay technology (luminescent ADP detection assay).

Tel: 1-631-559-9269 1-516-512-3133

Email: [info@creative-biomart.com](mailto:info@creative-biomart.com) Fax: 1-631-938-8127

45-1 Ramsey Road, Shirley, NY 11967, USA