

# Recombinant Human PITPNA Protein (Met1-Asp270), N-His tagged

**Cat. No.** PITPNA-4913H    **Lot. No.** (See product label)

## SPECIFICATION

<b>Product Overview</b>	Recombinant human PITPNA (Met1-Asp270) fused with the N-terminal His tag was expressed in E. coli.
<b>Species</b>	Human
<b>Source</b>	E.coli
<b>ProteinLength</b>	Met1-Asp270
<b>Form</b>	Lyophilized powder/frozen liquid
<b>Molecular Mass</b>	29.7 kDa
<b>Purity</b>	>90% as determined by SDS-PAGE.
<b>Notes</b>	For research use only.
<b>Storage</b>	Use a manual defrost freezer and avoid repeated freeze thaw cycles. Store at 2 to 8 centigrade for one week. Store at -20 to -80 centigrade for twelve months from the date of receipt.
<b>Storage Buffer</b>	Supplied as solution form in PBS or lyophilized from PBS.
<b>Reconstitution</b>	Reconstitute in sterile water for a stock solution.

 Tel: 1-631-559-9269    1-516-512-3133

 Email: [info@creative-biomart.com](mailto:info@creative-biomart.com)     Fax: 1-631-938-8127

 45-1 Ramsey Road, Shirley, NY 11967, USA

**Shipping** They are shipped out with dry ice/blue ice unless customers require otherwise.

## GENE INFORMATION

**Gene Name** PITPNA phosphatidylinositol transfer protein, alpha [ Homo sapiens (human) ]

**Official Symbol** PITPNA

**Synonyms** PITPNA; phosphatidylinositol transfer protein, alpha; phosphatidylinositol transfer protein, PITPN; phosphatidylinositol transfer protein alpha isoform; VIB1A; PI-TP-alpha; ptdInsTP alpha; ptdIns transfer protein alpha; PITPN; PI-TPalpha; MGC99649;

**Gene ID** 5306

**mRNA Refseq** NM\_006224

**Protein Refseq** NP\_006215

**MIM** 600174

**UniProt ID** Q00169

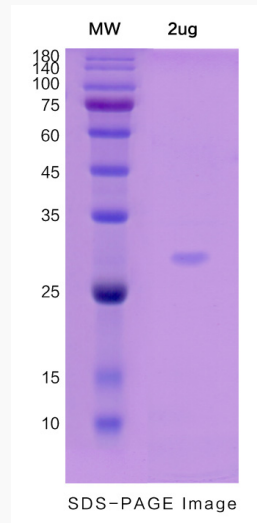
 Tel: 1-631-559-9269 1-516-512-3133

 Email: [info@creative-biomart.com](mailto:info@creative-biomart.com)  Fax: 1-631-938-8127

 45-1 Ramsey Road, Shirley, NY 11967, USA



**SDS-PAGE**



Tel: 1-631-559-9269 1-516-512-3133

Email: [info@creative-biomart.com](mailto:info@creative-biomart.com) Fax: 1-631-938-8127

45-1 Ramsey Road, Shirley, NY 11967, USA