

Recombinant Human PITPNA Protein, Myc/DDK-tagged, C13 and N15-labeled

Cat. No. PITPNA-778H **Lot. No.** (See product label)

SPECIFICATION

Product Overview	PITPNA MS Standard C13 and N15-labeled recombinant protein (NP_006215) with a C-terminal MYC/DDK tag, was expressed in HEK293 cells.
Species	Human
Source	HEK293
Description	This gene encodes a member of a family of lipid-binding proteins that transfer molecules of phosphatidylinositol or phosphatidylcholine between membrane surfaces. The protein is implicated in phospholipase C signaling and in the production of phosphatidylinositol 3,4,5-trisphosphate (PIP3) by phosphoinositide-3-kinase.
Molecular Mass	31.8 kDa
AA Sequence	MVLLKEYRVILPVSVD EYQVGQLYSVAEASKNETGGGEGVEVLVNEPYEKDGEKGQ YTHKIYHLQSKVPTFVRMLAPEGALNIHEKAWNAYPYCRTVITNEYMKEDFLIKIETW HKPDLGTQENVHKLEPEAWKHVEAVYIDIADRSQVLSKDYKAEEDPAKFKSIKTGRG PLGPNWKQELVNQKDCPYMCAYKLVTVKFKWWGLQNKVENFIHKQERRLFTNFHR QLFCWLDKWVDLTMDDIRRMEEETKRQLDEMQRKDPVKGMTADDTRTRPLEQKLI SEEDLAANDILDYKDDDDKV
Purity	> 80% as determined by SDS-PAGE and Coomassie blue staining
Stability	Stable for 3 months from receipt of products under proper storage and handling

 Tel: 1-631-559-9269 1-516-512-3133

 Email: info@creative-biomart.com  Fax: 1-631-938-8127

 45-1 Ramsey Road, Shirley, NY 11967, USA

conditions.

Storage Store at -80 centigrade. Avoid repeated freeze-thaw cycles.

Concentration 50 µg/mL as determined by BCA

Storage Buffer 100 mM glycine, 25 mM Tris-HCl, pH 7.3.

GENE INFORMATION

Gene Name [PITPNA phosphatidylinositol transfer protein alpha \[Homo sapiens \(human\) \]](#)

Official Symbol [PITPNA](#)

Synonyms PITPNA; phosphatidylinositol transfer protein, alpha; phosphatidylinositol transfer protein, PITPN; phosphatidylinositol transfer protein alpha isoform; VIB1A; PI-TP-alpha; ptdInsTP alpha; ptdIns transfer protein alpha; PITPN; PI-TPalpha; MGC99649;

Gene ID [5306](#)

mRNA Refseq [NM_006224](#)

Protein Refseq [NP_006215](#)

MIM [600174](#)

UniProt ID [Q00169](#)

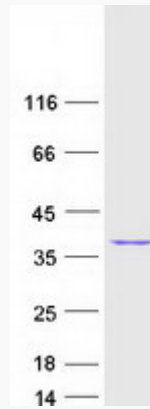
 Tel: 1-631-559-9269 1-516-512-3133

 Email: info@creative-biomart.com  Fax: 1-631-938-8127

 45-1 Ramsey Road, Shirley, NY 11967, USA



SDS-PAGE



Tel: 1-631-559-9269 1-516-512-3133

Email: info@creative-biomart.com Fax: 1-631-938-8127

45-1 Ramsey Road, Shirley, NY 11967, USA