

Recombinant Human PITPNB Protein, Myc/DDK-tagged, C13 and N15-labeled

Cat. No. PITPNB-1226H **Lot. No.** (See product label)

SPECIFICATION

Product Overview	PITPNB MS Standard C13 and N15-labeled recombinant protein (NP_036531) with a C-terminal MYC/DDK tag, was expressed in HEK293 cells.
Species	Human
Source	HEK293
Description	This gene encodes a cytoplasmic protein that catalyzes the transfer of phosphatidylinositol and phosphatidylcholine between membranes. This transfer activity is required for COPI complex-mediated retrograde transport from the Golgi apparatus to the endoplasmic reticulum. Alternative splicing of this gene results in multiple transcript variants.
Molecular Mass	31.5 kDa
AA Sequence	MVLIKEFRVVLPCSVQEYQVGQLYSVAEASKNETGGGEGIEVLKNEPYEKDGEKGQ YTHKIYHLKSKVPAFVRMIAPEGSLVFHEKAWNAYPYCRTIVTNEYMKDDFFIKIETW HKPDLGTLENVHGLDPNTWKTVEIVHIDIADRSQVEPADYKADEDPALFQSVKTKRG PLGPNWKKELANSPDCPQMCAKLVTIKFKWWGLQSKVENFIQKQEKRIFTNFHRQ LFCWIDKWIDLTMEDIRMEDETQKELETMRKRGSVRGTSAADVTRTRPLEQKLISE EDLAANDILDYKDDDDKV
Purity	> 80% as determined by SDS-PAGE and Coomassie blue staining

 Tel: 1-631-559-9269 1-516-512-3133

 Email: info@creative-biomart.com  Fax: 1-631-938-8127

 45-1 Ramsey Road, Shirley, NY 11967, USA

Stability	Stable for 3 months from receipt of products under proper storage and handling conditions.
Storage	Store at -80 centigrade. Avoid repeated freeze-thaw cycles.
Concentration	50 µg/mL as determined by BCA
Storage Buffer	100 mM glycine, 25 mM Tris-HCl, pH 7.3.

GENE INFORMATION

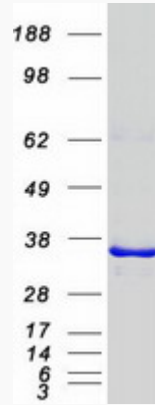
Gene Name	PITPNB phosphatidylinositol transfer protein beta [Homo sapiens (human)]
Official Symbol	PITPNB
Synonyms	PITPNB; phosphatidylinositol transfer protein, beta; phosphatidylinositol transfer protein beta isoform; VIB1B; ptdInsTP beta; PtdIns transfer protein beta; phosphatidylinositol transfer protein, beta; PtdInsTP; PI-TP-beta;
Gene ID	23760
mRNA Refseq	NM_012399
Protein Refseq	NP_036531
MIM	606876
UniProt ID	P48739

 Tel: 1-631-559-9269 1-516-512-3133

 Email: info@creative-biomart.com  Fax: 1-631-938-8127

 45-1 Ramsey Road, Shirley, NY 11967, USA

SDS-PAGE



 Tel: 1-631-559-9269 1-516-512-3133

 Email: info@creative-biomart.com  Fax: 1-631-938-8127

 45-1 Ramsey Road, Shirley, NY 11967, USA