

Recombinant Full Length Human PIWIL4 Protein, C-Flag-tagged

Cat. No. PIWIL4-1434HFL **Lot. No.** (See product label)

SPECIFICATION

Product Overview	Recombinant Full Length Human PIWIL4 Protein, fused to Flag-tag at C-terminus, was expressed in Mammalian cells.
Species	Human
Source	Mammalian Cells
Description	PIWIL4 belongs to the Argonaute family of proteins, which function in development and maintenance of germline stem cells.
Form	25 mM Tris HCl, pH 7.3, 100 mM glycine, 10% glycerol.
Molecular Mass	96.4 kDa
AA Sequence	<p>MSGRARVKARGIARSPSATEVGRIQASPLPRSDLSNNEASSSNGFLGTSRISTNDK YGISSGDAGSTFM ERGVKNKQDFMDLSICTREKLAHVNRCKTGSSGIPVKLVTNLF NLDFPQDWQLYQYHVITYIPDLASRRRLR IALLYSHSELSNKAKAFDGAIFLSQKLEEK VTELSSETQRGETIKMTITLKRELPSSSPVCIQVFNIIIF RKILKKLSMYQIGRNFYNPSE PMEIPQHKLSLWPGFAISVSYFERKLLFSADVSYKVLARNETVLEFMTAL CQRTGLSC FTQTCEKQLIGLIVLTRYNNRTYSIDDIDWSVKPTHTFQKRDGTEITYVDYYKQQYDIT VSD LNQPMLVSLKKKRNDNSEAQLAHLIPELCFLTGLTDQATSDFQLMKAVAEKTR LSPSGRQQRLARLVDN IQRNTNARFELETWGLHFGSQISLTGRIVPSEKILMQDHC QPVSAADWSKDIRTCKILNAQSLNTWLIL CSDRTEYVAESFLNCLRRVAGSMGFNV DYPKIIKVQENPAAFVRAIQQYVDPDVQLVMCILPSNQKTTYD SIKKYLSSDCPVPSQ</p>

 Tel: 1-631-559-9269 1-516-512-3133

 Email: info@creative-biomart.com  Fax: 1-631-938-8127

 45-1 Ramsey Road, Shirley, NY 11967, USA

CVLARTLNKQGMMMSIATKIAMQMTCKLGGELWAVEIPLKSLMVVGDVCKDALS K
 DVMVVGCVASVNPRITRWFSRCILQRTMTDVADCLKVFMTGALNKWYKYNHDLPA
 RIIVYRAGVGDGQL KTLIEYEVQLLSSVAESSNTSSRLSVIVVRKKCMRFFTEMN
 RTVQNPPPLGTVVDSEATRNEWYDFYL ISQVACRGTVSPTYYNVIYDDNGLKPDHM
 QRLTFKLCHLYYNWPGIVSVPAPCQYAHKLTFLVAQSIHKE
 PSLELANHLFYLTRTRPLEQKLISEEDLAANDILDYKDDDDKV

Purity	> 80% as determined by SDS-PAGE and Coomassie blue staining.
Stability	Stable for 12 months from the date of receipt of the product under proper storage and handling conditions. Avoid repeated freeze-thaw cycles.
Storage	Store at -80 centigrade.
Concentration	>50 ug/mL as determined by microplate BCA method.
Preparation	Recombinant protein was captured through anti-DDK affinity column followed by conventional chromatography steps.
Protein Pathways	Dorso-ventral axis formation
Full Length	Full L.

GENE INFORMATION

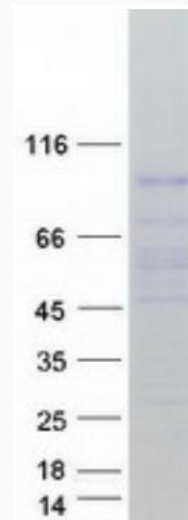
Gene Name	PIWIL4 piwi like RNA-mediated gene silencing 4 [Homo sapiens (human)]
Official Symbol	PIWIL4
Synonyms	HIWI2; MIWI2

 Tel: 1-631-559-9269 1-516-512-3133

 Email: info@creative-biomart.com  Fax: 1-631-938-8127

 45-1 Ramsey Road, Shirley, NY 11967, USA

Gene ID	143689
mRNA Refseq	NM_152431.3
Protein Refseq	NP_689644.2
MIM	610315
UniProt ID	Q7Z3Z4



Coomassie blue staining of purified PIWIL4 protein.

 Tel: 1-631-559-9269 1-516-512-3133

 Email: info@creative-biomart.com  Fax: 1-631-938-8127

 45-1 Ramsey Road, Shirley, NY 11967, USA