

Recombinant Human PIWIL4 Protein, Myc/DDK-tagged, C13 and N15-labeled

Cat. No. PIWIL4-2454H Lot. No. (See product label)

SPECIFICATION

Product Overview	PIWIL4 MS Standard C13 and N15-labeled recombinant protein (NP_689644) with a C-terminal MYC/DDK tag, was expressed in HEK293 cells.
Species	Human
Source	HEK293
Description	PIWIL4 belongs to the Argonaute family of proteins, which function in development and maintenance of germline stem cells.
Molecular Mass	96.6 kDa
AA Sequence	<p>MSGRARVKARGIARSPSATEVGRIQASPLPRSVDLNNEASSSNGFLGTSRISTNDK YGISSGDAGSTFMERGVKNKQDFMDLSICTREKLAHVNRNCKTGSSGIPVKLVNLFN LDFPQDWQLYQYHVITYIPDLASRRLRIALLYSHSELSNKAKAFDGAIFLSQKLEEKV TELSSETQRGETIKMTITLKRELPSSSPVCIQVFNIIFRKILKLSMYQIGRNFYNPSEP MEIPQHKLSLWPGFAISVSYFERKLLFSADVSYKVLARNETVLEFMTALCQRTGLSCFT QTCEKQLIGLIVLTRYNNRTYSIDDIDWSVKPHTHFQKRDGTEITYVDYYKQQYDITVS DLNQPMLVSLKRRNDNSEAQLAHLIPELCFLTGLTDQATSDFQLMKAVAEKTRLS PSGRQQRLARLVDNIQRNTNARFELETWGLHFGSQISLTGRIVPSEKILMQDHICQP VSAADWSKDIRTCKILNAQSLNTWLILCSDRTEYVAESFLNCLRRVAGSMGFNVDYP KIIKVQENPAAFVRAIQQYVDPDVQLVMCILPSNQKTYYSIKKYLSSDCPVPSQCVL ARTLNKQGMMSIATKIAMQMTCKLGGELWAVEIPLKSLMVVGIDVCKDALSKDVM</p>

 Tel: 1-631-559-9269 1-516-512-3133

 Email: info@creative-biomart.com  Fax: 1-631-938-8127

 45-1 Ramsey Road, Shirley, NY 11967, USA

VVGCVASVNPRITRWFSRCILQRTMTDVADCLKVFMTGALNKWYKYNHDLPARIIIV
 RAGVGDGQLKTLIEYVLPQLLSSVAESSNTSSRLSVIVVRKKCMPRFFTEMNRTVQ
 NPPLGTVVDSEATRNEWYDFYLISQVACRGTVSPTYYNVIYDDNGLKPDHMQRLTF
 KLCHLYYNWPGIVSVPAPCQYAHKLTFLVAQSIHKEPSLELANHLFYLTRTRPLEQKL
 ISEEDLAANDILDYKDDDDKV

Purity > 80% as determined by SDS-PAGE and Coomassie blue staining

Stability Stable for 3 months from receipt of products under proper storage and handling conditions.

Storage Store at -80 centigrade. Avoid repeated freeze-thaw cycles.

Concentration 50 µg/mL as determined by BCA

Storage Buffer 100 mM glycine, 25 mM Tris-HCl, pH 7.3.

GENE INFORMATION

Gene Name [PIWIL4 piwi like RNA-mediated gene silencing 4 \[Homo sapiens \(human\) \]](#)

Official Symbol [PIWIL4](#)

Synonyms PIWIL4; piwi-like 4 (Drosophila); piwi-like protein 4; FLJ36156; HIWI2; Miwi2; MIWI2; DKFZp686P01248;

Gene ID [143689](#)

mRNA Refseq [NM_152431](#)

Protein Refseq [NP_689644](#)

 Tel: 1-631-559-9269 1-516-512-3133

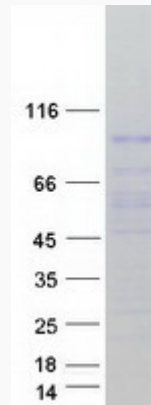
 Email: info@creative-biomart.com  Fax: 1-631-938-8127

 45-1 Ramsey Road, Shirley, NY 11967, USA

MIM 610315

UniProt ID Q7Z3Z4

SDS-PAGE



 Tel: 1-631-559-9269 1-516-512-3133

 Email: info@creative-biomart.com  Fax: 1-631-938-8127

 45-1 Ramsey Road, Shirley, NY 11967, USA