

Active Recombinant Human PKM Protein, His-tagged

Cat. No. PKM-009H **Lot. No.** (See product label)

SPECIFICATION

Product Overview	Recombinant human PKM2 (1-531aa), fused to His-tag at N-terminus, was expressed in E. coli and purified by using conventional chromatography.
Species	Human
Source	E.coli
ProteinLength	1-531 a.a.
Description	This gene encodes a protein involved in glycolysis. The encoded protein is a pyruvate kinase that catalyzes the transfer of a phosphoryl group from phosphoenolpyruvate to ADP, generating ATP and pyruvate. This protein has been shown to interact with thyroid hormone and may mediate cellular metabolic effects induced by thyroid hormones. This protein has been found to bind Opa protein, a bacterial outer membrane protein involved in gonococcal adherence to and invasion of human cells, suggesting a role of this protein in bacterial pathogenesis. Several alternatively spliced transcript variants encoding a few distinct isoforms have been reported.
Form	Liquid
Bio-activity	> 25,000pmol/min/μg. One unit will convert 1.0pmole of phospho(enol)pyruvate to pyruvate per minute at pH 7.5 at 37 centigrade.
Molecular Mass	60.1 kDa (551aa)

 Tel: 1-631-559-9269 1-516-512-3133

 Email: info@creative-biomart.com  Fax: 1-631-938-8127

 45-1 Ramsey Road, Shirley, NY 11967, USA

AA Sequence	< MGSSHHHHHHSSGLVPRGSH> MSKPHSEAGTAFIQTQQLHAAMADTFLEHMCR LDIDSPPITARNTGIICTIGPASRSVETLKEMIKSGMNVARLNFSHGTHEYHAETIKNV RTATESFASDPILYRPVAVALDTKGPEIRTGLIKGSGTAEVELKKGATLKITLDNAYME KCDENILWLDYKNICKVVEVGSKIYVDDGLISLQVKQKGADFLVTEVENGGSLGSKK GVNLPGAAVDLPAVSEKDIQDLKFGVEQDVMVFASFIRKASDVHEVRKVLGEK GK NIKIISKIENHEGVRRFDEILEASDGIMVARGDLGIEIPA EKVFLAQKMMIGRCNRAGK PVICATQMLESMIKKPRPTRAEGSDVANAVLDGADCIMLSGETAKGDYPLEAVRMQ HLIAREAEAAIYHLQLFEELRRLAPITSDPTEATAVGAVEASFKCCSGAIIVLTKSGRSA HQVARYRPRAPIIAVTRNPQTARQAHLYRGIFPVLCKDPVQEAWAEDVDLRVNFAM NVGKARGFFKKGDVVIVLTGWRPGSGFTNTMRVVPVP
Endotoxin	< 1 EU/μg of protein (determined by LAL method)
Purity	> 95% by SDS-PAGE
Storage	Can be stored at +2 to +8 centigrade for 1 week. For long term storage, aliquot and store at -20 to -80 centigrade. Avoid repeated freezing and thawing cycles.
Concentration	1 mg/mL (determined by Bradford assay)
Storage Buffer	20mM Tris-HCl buffer (pH 8.0) containing 10% glycerol

GENE INFORMATION

Gene Name	PKM pyruvate kinase M1/2 [Homo sapiens (human)]
Official Symbol	PKM
Synonyms	PKM; pyruvate kinase M1/2; PK3; TCB; p58; OIP3; PKM2; CTHBP; THBP1; HEL-S-30; pyruvate kinase PKM; OPA-interacting protein 3 PK, muscle type; cytosolic thyroid hormone-binding protein; epididymis secretory

 Tel: 1-631-559-9269 1-516-512-3133

 Email: info@creative-biomart.com  Fax: 1-631-938-8127

 45-1 Ramsey Road, Shirley, NY 11967, USA

protein Li 30; pyruvate kinase 2/3; pyruvate kinase isozymes M1/M2; pyruvate kinase muscle isozyme; pyruvate kinase, muscle; thyroid hormone-binding protein 1; thyroid hormone-binding protein, cytosolic; tumor M2-PK; EC 2.7.1.40

Gene ID [5315](#)

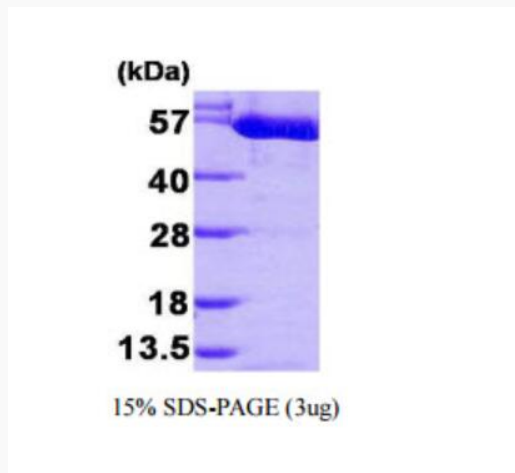
mRNA Refseq [NM_002654](#)

Protein Refseq [NP_002645](#)

MIM [179050](#)

UniProt ID [P14618](#)

SDS-PAGE



3 µg by SDS-PAGE under reducing condition and visualized by coomassie blue stain.

 Tel: 1-631-559-9269 1-516-512-3133

 Email: info@creative-biomart.com  Fax: 1-631-938-8127

 45-1 Ramsey Road, Shirley, NY 11967, USA