

Active Recombinant Human PKM2 Protein, His-tagged

Cat. No. PKM-01H Lot. No. (See product label)

SPECIFICATION

Product Overview	Recombinant human PKM2 (1-531aa), fused to His-tag at N-terminus, was expressed in E. coli and purified by using conventional chromatography.
Species	Human
Source	E.coli
ProteinLength	1-531 a.a.
Description	<p>This gene encodes a protein involved in glycolysis. The encoded protein is a pyruvate kinase that catalyzes the transfer of a phosphoryl group from phosphoenolpyruvate to ADP, generating ATP and pyruvate. This protein has been shown to interact with thyroid hormone and may mediate cellular metabolic effects induced by thyroid hormones. This protein has been found to bind Opa protein, a bacterial outer membrane protein involved in gonococcal adherence to and invasion of human cells, suggesting a role of this protein in bacterial pathogenesis. Several alternatively spliced transcript variants encoding a few distinct isoforms have been reported.</p>
Form	Liquid
Bio-activity	Specific activity: > 25,000 pmol/min/μg. One unit will convert 1.0 pmole of phospho(enol)pyruvate to pyruvate per minute at pH 7.5 at 37 centigrade.
Molecular Mass	60.1 kDa (551aa)

 Tel: 1-631-559-9269 1-516-512-3133

 Email: info@creative-biomart.com  Fax: 1-631-938-8127

 45-1 Ramsey Road, Shirley, NY 11967, USA

AA Sequence

MSKPHSEAGTAFIQTTQQLHAAMADTFLEHMCRLDIDSPITARNTGIICTIGPASRSV
 ETLKEMIKSGMNVARLNFSHGTHEYHAETIKNVRTATESFASDPILYRPVAVALDTKG
 PEIRTGLIKGSGTAEVELKKGATLKITLDNAYMEKCDENILWLDYKNICKVVEVGSKIY
 VDDGLISLQVKQKGADFLVTEVENGSSLGSKKGVNLPAAVDLPAVSEKDIQDLKFG
 VEQDVDMVFASFIRKASDVHEVRKVLGEKGNIKIISKIENHEGVRRFDEILEASDGIM
 VARGDLGIEIPAQKMMIGRCNRAGKPVICATQMLESMIKKPRPTRAEGSDV
 ANAVLDGADCIMLSGETAKGDYPLEAVRMQHIAAREAAIYHLQLFEELRRLAPITS
 DPTEATAVGAVEASFKCCSGAIIVLTKSGRSAHQVARYRPRAPIIIVTRNPQATARQAH
 LYRGIFPVLCKDPVQEAWAEDVDLRVNFAMNVGKARGFFKKGDVVIVLTGWRPGS
 GFTNTMRVVPVP

Endotoxin < 1 EU/μg of protein (determined by LAL method)

Purity > 95% by SDS-PAGE

Applications SDS-PAGE, Enzyme Activity

Storage Can be stored at +2 to +8 centigrade for 1 week. For long term storage, aliquot and store at -20 to -80 centigrade. Avoid repeated freezing and thawing cycles.

Concentration 1 mg/mL (determined by Bradford assay)

Storage Buffer 20 mM Tris-HCl buffer (pH 8.0) containing 10% glycerol

GENE INFORMATION

Gene Name PKM pyruvate kinase M1/2 [Homo sapiens (human)]

Official Symbol PKM

Synonyms PKM; pyruvate kinase M1/2; PK3; TCB; p58; OIP3; PKM2; CTHBP; THBP1; HEL-S-

 Tel: 1-631-559-9269 1-516-512-3133

 Email: info@creative-biomart.com  Fax: 1-631-938-8127

 45-1 Ramsey Road, Shirley, NY 11967, USA

30; pyruvate kinase PKM; OPA-interacting protein 3; PK, muscle type; cytosolic thyroid hormone-binding protein; epididymis secretory protein Li 30; pyruvate kinase 2/3; pyruvate kinase isozymes M1/M2; pyruvate kinase muscle isozyme; pyruvate kinase, muscle; thyroid hormone-binding protein 1; thyroid hormone-binding protein, cytosolic; tumor M2-PK; EC 2.7.1.40

Gene ID [5315](#)

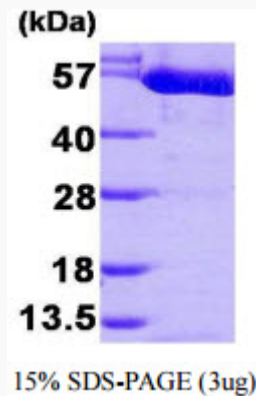
mRNA Refseq [NM_002654](#)

Protein Refseq [NP_002645](#)

MIM [179050](#)

UniProt ID [P14618](#)

SDS-PAGE



 Tel: 1-631-559-9269 1-516-512-3133

 Email: info@creative-biomart.com  Fax: 1-631-938-8127

 45-1 Ramsey Road, Shirley, NY 11967, USA