

# Recombinant Full Length Human PKM Protein, C-Flag-tagged

Cat. No. PKM-1018HFL Lot. No. (See product label)

## SPECIFICATION

<b>Product Overview</b>	Recombinant Full Length Human PKM Protein, fused to Flag-tag at C-terminus, was expressed in Mammalian cells.
<b>Species</b>	Human
<b>Source</b>	Mammalian Cells
<b>Description</b>	This gene encodes a protein involved in glycolysis. The encoded protein is a pyruvate kinase that catalyzes the transfer of a phosphoryl group from phosphoenolpyruvate to ADP, generating ATP and pyruvate. This protein has been shown to interact with thyroid hormone and may mediate cellular metabolic effects induced by thyroid hormones. This protein has been found to bind Opa protein, a bacterial outer membrane protein involved in gonococcal adherence to and invasion of human cells, suggesting a role of this protein in bacterial pathogenesis. Several alternatively spliced transcript variants encoding a few distinct isoforms have been reported.
<b>Form</b>	25 mM Tris HCl, pH 7.3, 100 mM glycine, 10% glycerol.
<b>Molecular Mass</b>	57.9 kDa
<b>AA Sequence</b>	MSKPHSEAGTAFIQTTQQLHAAMADTFLEHMCRLDIDSPPIARNTGIICTIGPASRSV ETLKEMIKSGMN VARLNFSHGTHEYHAETIKNVRTATESFASDPILYRPVAVALDTK GPEIRTGLIKSGSTA EVELKKGATL KITLDNAYMEKCDENILWLDYKNICKVVEVGSKI YVDDGLISLQVKQKGADFLVTEVENGGSLGSKKGVN LPGAAVDLPVSEKDIQDLK FGVEQDVDMVFASFIRKASDVHEVRKVLGEKKGNIKIISKIENHEGVRRF DEILEASD

 Tel: 1-631-559-9269 1-516-512-3133

 Email: [info@creative-biomart.com](mailto:info@creative-biomart.com)  Fax: 1-631-938-8127

 45-1 Ramsey Road, Shirley, NY 11967, USA

GIMVARGDLGIEIPAEEKVFLAQKMMIGRCNRAGKPVICATQMLESMIKKPRPTRAEG  
 SDVAN AVLDGADCIMLSGETAKGDYPLEAVRMQHLIAREAEAAMFHRKLFEELVRA  
 SSHSTDLMEAMAMGSVEAS YKCLAAALIVLTESGRSAHQVARYRPRAPIIAVTRNPQ  
 TARQAHLRYGIFPVLCKDPVQEAWAEDVDLRV  
 NFAMNVGKARGFFKKGDVVIVLTGWRPGSGFTNTMRVVPVPTTRTRPLEQKLISEED  
 LAANDILDYKDDDDKV

<b>Purity</b>	> 80% as determined by SDS-PAGE and Coomassie blue staining.
<b>Stability</b>	Stable for 12 months from the date of receipt of the product under proper storage and handling conditions. Avoid repeated freeze-thaw cycles.
<b>Storage</b>	Store at -80 centigrade.
<b>Concentration</b>	>50 ug/mL as determined by microplate BCA method.
<b>Preparation</b>	Recombinant protein was captured through anti-DDK affinity column followed by conventional chromatography steps.
<b>Protein Families</b>	Druggable Genome
<b>Protein Pathways</b>	Glycolysis / Gluconeogenesis, Metabolic pathways, Purine metabolism, Pyruvate metabolism, Type II diabetes mellitus
<b>Full Length</b>	Full L.

## GENE INFORMATION

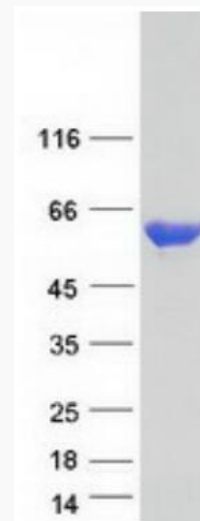
<b>Gene Name</b>	PKM pyruvate kinase M1/2 [ Homo sapiens (human) ]
<b>Official Symbol</b>	PKM

 Tel: 1-631-559-9269 1-516-512-3133

 Email: [info@creative-biomart.com](mailto:info@creative-biomart.com)  Fax: 1-631-938-8127

 45-1 Ramsey Road, Shirley, NY 11967, USA

<b>Synonyms</b>	PK3; TCB; p58; OIP3; PKM2; CTHBP; THBP1; HEL-S-30
<b>Gene ID</b>	5315
<b>mRNA Refseq</b>	NM_182471.4
<b>Protein Refseq</b>	NP_872271.1
<b>MIM</b>	179050
<b>UniProt ID</b>	P14618



Coomassie blue staining of purified PKM protein.

 Tel: 1-631-559-9269 1-516-512-3133

 Email: [info@creative-biomart.com](mailto:info@creative-biomart.com)  Fax: 1-631-938-8127

 45-1 Ramsey Road, Shirley, NY 11967, USA