

# Recombinant Human PKM Protein, Myc/DDK-tagged, C13 and N15-labeled

**Cat. No.** PKM-1597H    **Lot. No.** (See product label)

## SPECIFICATION

<b>Product Overview</b>	PKM2 MS Standard C13 and N15-labeled recombinant protein (NP_872271) with a C-terminal MYC/DDK tag, was expressed in HEK293 cells.
<b>Species</b>	Human
<b>Source</b>	HEK293
<b>Description</b>	This gene encodes a protein involved in glycolysis. The encoded protein is a pyruvate kinase that catalyzes the transfer of a phosphoryl group from phosphoenolpyruvate to ADP, generating ATP and pyruvate. This protein has been shown to interact with thyroid hormone and may mediate cellular metabolic effects induced by thyroid hormones. This protein has been found to bind Opa protein, a bacterial outer membrane protein involved in gonococcal adherence to and invasion of human cells, suggesting a role of this protein in bacterial pathogenesis. Several alternatively spliced transcript variants encoding a few distinct isoforms have been reported.
<b>Molecular Mass</b>	57.9 kDa
<b>AA Sequence</b>	MSKPHSEAGTAFIQTQQLHAAMADTFLEHMCRLDIDSPITARNTGIICTIGPASRSV ETLKEMIKSGMNVARLNFSGHTHEYHAETIKNVRTATESFASDPILYRPVAVALDTKG PEIRTGLIKGSGTAEVELKKGATLKITLDNAYMEKCDENILWLDYKNICKVVEVGSKIY VDDGLISLQVKQKGADFLVTEVENGGSLGSKKGVNLPAAVDLPVSEKDIQDLKFG VEQDVDMVFASFIRKASDVHEVRKVLGEKGKNIKIISKIENHEGVRRFDEILEASDGIM

 Tel: 1-631-559-9269    1-516-512-3133

 Email: [info@creative-biomart.com](mailto:info@creative-biomart.com)     Fax: 1-631-938-8127

 45-1 Ramsey Road, Shirley, NY 11967, USA

VARGDLGIEIPAEKVFLAQKMMIGRCNRAGKPVICATQMLESMIKKPRPTRAEGSDV  
 ANAVLDGADCIMLSGETAKGDYPLEAVRMQHLIAREAEAAMFHRKLFEEELVRASSHS  
 TDLMEAMAMGSVEASYKCLAAALIVLTESGRSAHQVARYRPRAPIIAVTRNPQTARQ  
 AHLRYGIFPVLCKDPVQEAWAEDVDLRVNFAMNVGKARGFFKKGDVVIVLTGWRPG  
 SGFTNTMRVVPVTRTRTRPLEQKLISEEDLAANDILDYKDDDDKV

**Purity** > 80% as determined by SDS-PAGE and Coomassie blue staining

**Stability** Stable for 3 months from receipt of products under proper storage and handling conditions.

**Storage** Store at -80 centigrade. Avoid repeated freeze-thaw cycles.

**Concentration** 50 µg/mL as determined by BCA

**Storage Buffer** 100 mM glycine, 25 mM Tris-HCl, pH 7.3.

## GENE INFORMATION

**Gene Name** PKM pyruvate kinase M1/2 [ Homo sapiens (human) ]

**Official Symbol** PKM

**Synonyms** PKM; pyruvate kinase M1/2; PK3; TCB; p58; OIP3; PKM2; CTHBP; THBP1; HEL-S-30; pyruvate kinase PKM; OPA-interacting protein 3; PK, muscle type; cytosolic thyroid hormone-binding protein; epididymis secretory protein Li 30; pyruvate kinase 2/3; pyruvate kinase isozymes M1/M2; pyruvate kinase muscle isozyme; pyruvate kinase, muscle; thyroid hormone-binding protein 1; thyroid hormone-binding protein, cytosolic; tumor M2-PK; EC 2.7.1.40

**Gene ID** 5315

 Tel: 1-631-559-9269 1-516-512-3133

 Email: [info@creative-biomart.com](mailto:info@creative-biomart.com)  Fax: 1-631-938-8127

 45-1 Ramsey Road, Shirley, NY 11967, USA

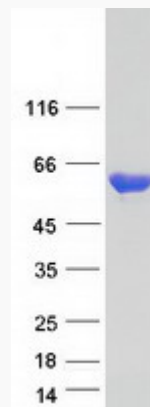
mRNA Refseq [NM\\_182471](#)

Protein Refseq [NP\\_872271](#)

MIM [179050](#)

UniProt ID [P14618](#)

SDS-PAGE



 Tel: 1-631-559-9269 1-516-512-3133

 Email: [info@creative-biomart.com](mailto:info@creative-biomart.com)  Fax: 1-631-938-8127

 45-1 Ramsey Road, Shirley, NY 11967, USA