

Recombinant Human PKM2 Protein, His&GST-tagged

Cat. No. PKM2-1942H Lot. No. (See product label)

SPECIFICATION

Product Overview	Recombinant Human PKM2 Protein (Met1-Pro531) with N-His&GST tag was expressed in E. coli.
Species	Human
Source	E.coli
ProteinLength	Met1-Pro531
Description	<p>This gene encodes a protein involved in glycolysis. The encoded protein is a pyruvate kinase that catalyzes the transfer of a phosphoryl group from phosphoenolpyruvate to ADP, generating ATP and pyruvate. This protein has been shown to interact with thyroid hormone and may mediate cellular metabolic effects induced by thyroid hormones. This protein has been found to bind Opa protein, a bacterial outer membrane protein involved in gonococcal adherence to and invasion of human cells, suggesting a role of this protein in bacterial pathogenesis. Several alternatively spliced transcript variants encoding a few distinct isoforms have been reported.</p>
Form	Freeze-dried powder
Molecular Mass	Predicted Molecular Mass: 87.9 kDa Accurate Molecular Mass: 88 kDa
Purity	> 95%

 Tel: 1-631-559-9269 1-516-512-3133

 Email: info@creative-biomart.com  Fax: 1-631-938-8127

 45-1 Ramsey Road, Shirley, NY 11967, USA

Applications	Positive Control; Immunogen; SDS-PAGE; WB.
Stability	The thermal stability is described by the loss rate. The loss rate was determined by accelerated thermal degradation test, that is, incubate the protein at 37 centigrade for 48h, and no obvious degradation and precipitation were observed. The loss rate is less than 5% within the expiration date under appropriate storage condition.
Storage	Avoid repeated freeze/thaw cycles. Store at 2-8 centigrade for one month. Aliquot and store at -80 centigrade for 12 months.
Storage Buffer	20mM Tris, 150mM NaCl, pH8.0, containing 1mM EDTA, 1mM DTT, 0.01% SKL, 5% Trehalose and Proclin300.
Reconstitution	Reconstitute in 20mM Tris, 150mM NaCl (pH8.0) to a concentration of 0.1-1.0 mg/mL. Do not vortex.

GENE INFORMATION

Gene Name	PKM2 pyruvate kinase, muscle [Homo sapiens (human)]
Official Symbol	PKM2
Synonyms	PKM2; pyruvate kinase, muscle; pyruvate kinase isozymes M1/M2; OIP3; PK3; THBP1; p58; OIP-3; tumor M2-PK; PK, muscle type; pyruvate kinase 2/3; OPA-interacting protein 3; pyruvate kinase muscle isozyme; thyroid hormone-binding protein 1; cytosolic thyroid hormone-binding protein; thyroid hormone-binding protein, cytosolic; PKM; TCB; CTHBP; MGC3932;
Gene ID	5315
mRNA Refseq	NM_001206797

 Tel: 1-631-559-9269 1-516-512-3133

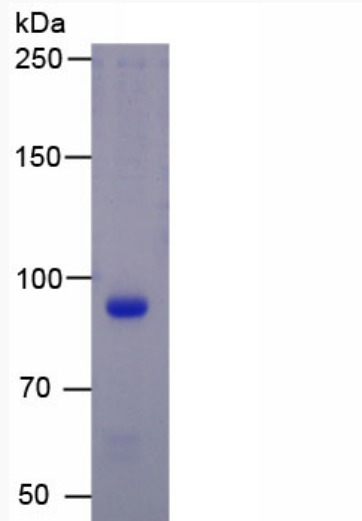
 Email: info@creative-biomart.com  Fax: 1-631-938-8127

 45-1 Ramsey Road, Shirley, NY 11967, USA

Protein Refseq NP_001193726

MIM 179050

UniProt ID P14618



 Tel: 1-631-559-9269 1-516-512-3133

 Email: info@creative-biomart.com  Fax: 1-631-938-8127

 45-1 Ramsey Road, Shirley, NY 11967, USA