

Active Recombinant Full Length Human PKN1 Protein, DDK-tagged, Biotinylated

Cat. No. PKN1-2842HF Lot. No. (See product label)

SPECIFICATION

Product Overview	Full-length human PKN1 [1-942(end) amino acids of accession number NP_002732.3] was expressed as N-terminal DYKDDDDK tagged, biotinylated protein (109 kDa) using baculovirus expression system. The protein was purified by using DYKDDDDK tag antibody agarose.
Species	Human
Source	Sf21 Cells
ProteinLength	1-942(end)
Form	50 mM Tris-HCl, 150 mM NaCl, 0.05% Brij35, 1 mM DTT, 10% glycerol, pH7.5
Bio-activity	The activity was measured by off-chip mobility shift assay(MSA). The enzyme was incubated with fluorescence-labeled substrate and Mg(or Mn)/ATP. The phosphorylated and unphosphorylated substrates were separated and detected by MSA device.
Purity	97%
Applications	SDS-PAGE
Storage	Store at -80C. Avoid repeating freeze-thaws.

 Tel: 1-631-559-9269 1-516-512-3133

 Email: info@creative-biomart.com  Fax: 1-631-938-8127

 45-1 Ramsey Road, Shirley, NY 11967, USA

Conjugation Biotin

GENE INFORMATION

Gene Name protein kinase N1

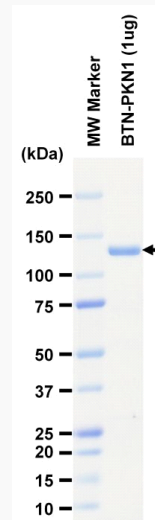
Official Symbol PKN1

Synonyms PKN1;DBK;PAK-1;PAK1;PKN;PKN-ALPHA;PRK1;PRKCL1;MGC46204

Protein Refseq [NP_002732.3](#)

UniProt ID [Q16512](#)

SDS-PAGE

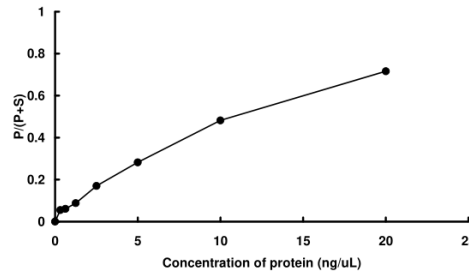


The purity was assessed by SDS-PAGE/CBB staining.

 Tel: 1-631-559-9269 1-516-512-3133

 Email: info@creative-biomart.com  Fax: 1-631-938-8127

 45-1 Ramsey Road, Shirley, NY 11967, USA

Activity data**Activity data**

The activity was measured by off-chip mobility shift assay(MSA). The enzyme was incubated with fluorescence-labeled substrate and Mg(or Mn)/ATP. The phosphorylated and unphosphorylated substrates were separated and detected by MSA device.

 Tel: 1-631-559-9269 1-516-512-3133

 Email: info@creative-biomart.com  Fax: 1-631-938-8127

 45-1 Ramsey Road, Shirley, NY 11967, USA