

Recombinant Human PKN2 Protein, Myc/DDK-tagged, C13 and N15-labeled

Cat. No. PKN2-1236H **Lot. No.** (See product label)

SPECIFICATION

Product Overview	PKN2 MS Standard C13 and N15-labeled recombinant protein (NP_006247) with a C-terminal MYC/DDK tag, was expressed in HEK293 cells.
Species	Human
Source	HEK293
Description	PKN2 (Protein Kinase N2) is a Protein Coding gene. Diseases associated with PKN2 include Pyriform Sinus Cancer and Autosomal Dominant Non-Syndromic Intellectual Disability 6. Among its related pathways are Signaling by GPCR and Signaling by Rho GTPases. Gene Ontology (GO) annotations related to this gene include protein kinase activity. An important paralog of this gene is PKN1.
Molecular Mass	111.9 kDa
AA Sequence	MASNPERGEILLTELQGDSRSLPFSENVSAVQKLDKDFSDTMVQQKLDLDDIKDRIKREIRK ELKIKEGAENLRKVTTDKKSLAYVDNLIKSNKKLEELHHKLQELNAHIVSDPEDITD CPRTPDTPNNDPRCSTSNRNLKALQKQLDIELKVQGAENMIQMYSNGSSKDRKLH GTAQQLLQDSKTKIEVIRMQILQAVQTNELAFDNAKPVISPLELRMEELRHHFRIEFAV AEGAKNVMKLLGSGKVTDRKALSEAQARFNESSQKDLLKYSLEQRLNEVPKNHPK SRIIEELSLVAASPTLSPRQSMISTQNQYSTLSKPAALTGTLEVRLMGCQDILENVPG RSKATSVALPGWSPSETRSSFMSRTSKSKSGSSRNLLKTDDLSNDVCAVLKLDNTV VGQTSWKPISNQSVDQKFTLELDRSRELEISVYWRDWRSLCAVKFLRLEDFLDNQR

 Tel: 1-631-559-9269 1-516-512-3133

 Email: info@creative-biomart.com  Fax: 1-631-938-8127

 45-1 Ramsey Road, Shirley, NY 11967, USA

HGMCLYLEPQGTLFAEVTTFFNPVIERRPKLQRQKKIFSKQQGKTFLRAPQMNINIAT
 WGRLVRRRAIPTVNHSGETFSPQAPVPTTVPVVDVRIPQLAPPASDSTVTKLDFDLEPE
 PPPAPPRASSLGEIDESSELRVLDIPGQDSETVFDIQNDRNSILPKSQSEYKPDPQPQS
 GLEYSIGIQELEDRRSQQRFFQNLQDFRCCAVLGRGHFGKVLLEAYKNTNEMFAIKA
 LKKGDIVARDEVDSLMEKRIFETVNSVRHPFLVNLFACFQTKEHVCFVMEYAAGGD
 LMMHIHTDVFSEPRAVFYAACVVLGLQYLHEHKIVYRDLKLDNLLLDTEGFVKIADFG
 LCKEGMGYGDRTSTFCGTPEFLAPEVLTETSYTRAVDWWGLGVLIYEMLVGESPPF
 GDDEEEVFDIVNDEVRYPRFLSTEAISIMRLLRRNPERRLGASEKDAEDVKKHPF
 FRLIDWSALMDKKVKPPFIPTIRGREDVSNFDDEFTSEAPILTPPREPRILSEEEQEMF
 RDFDYIADWCTRTRPLEQKLISEEDLAANDILDYKDDDDKV

Purity > 80% as determined by SDS-PAGE and Coomassie blue staining

Stability Stable for 3 months from receipt of products under proper storage and handling conditions.

Storage Store at -80 centigrade. Avoid repeated freeze-thaw cycles.

Concentration 50 µg/mL as determined by BCA

Storage Buffer 100 mM glycine, 25 mM Tris-HCl, pH 7.3.

GENE INFORMATION

Gene Name PKN2 protein kinase N2 [*Homo sapiens* (human)]

Official Symbol PKN2

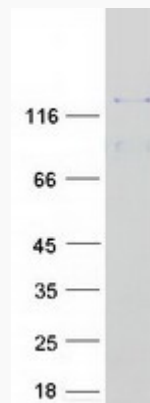
Synonyms PKN2; protein kinase N2; PRKCL2, protein kinase C like 2; serine/threonine-protein kinase N2; cardiolipin activated protein kinase Pak2; Pak 2; PRK2; PKN gamma; protein kinase C-like 2; protein-kinase C-related kinase 2; cardiolipin-activated protein

 Tel: 1-631-559-9269 1-516-512-3133

 Email: info@creative-biomart.com  Fax: 1-631-938-8127

 45-1 Ramsey Road, Shirley, NY 11967, USA

kinase Pak2; PAK2; Pak-2; PRKCL2; PRO2042; MGC71074; MGC150606;

Gene ID 5586**mRNA Refseq** NM_006256**Protein Refseq** NP_006247**MIM** 602549**UniProt ID** Q16513**SDS-PAGE** Tel: 1-631-559-9269 1-516-512-3133 Email: info@creative-biomart.com  Fax: 1-631-938-8127 45-1 Ramsey Road, Shirley, NY 11967, USA