

Recombinant Human PLA1A Protein, Myc/DDK-tagged, C13 and N15-labeled

Cat. No. PLA1A-2505H Lot. No. (See product label)

SPECIFICATION

Product Overview	PLA1A MS Standard C13 and N15-labeled recombinant protein (NP_056984) with a C-terminal MYC/DDK tag, was expressed in HEK293 cells.
Species	Human
Source	HEK293
Description	The protein encoded by this gene is a phospholipase that hydrolyzes fatty acids at the sn-1 position of phosphatidylserine and 1-acyl-2-lysophosphatidylserine. This secreted protein hydrolyzes phosphatidylserine in liposomes. Three transcript variants encoding different isoforms have been found for this gene.
Molecular Mass	49.5 kDa
AA Sequence	<p>MPPGPWESCFWVGGLILWLSVGSSGDAPPTPQPKCADFQSANLFEGTDLKVQFLL FVPSNPSCGQLVEGSSDLQNSGFNATLGTKLIHGFVRLGTPKSWIDTFIRTLRATN ANVIAVDWIYGSTGVYFSAVKNVIKLSLEISLFLNKLLVLGVSESSIHIIGVSLGAHVGG MVGQLFGGQLGQITGLDPAGPEYTRASVEERLDAGDALFVEAIHTDTDNLGIRIPVG HVDYFVNGGQDQPGCPTFFYAGYSYLICDHMRAVHLYISALENSCPLMAFPCASYK AFLAGRCLDCFNPFLLSCPRIGLVEQGGVKIEPLPKEVKVYLLTSSAPYCMHHSLE FHLKELRNKDTNIEVTLSSNITSSSKITIPKQQRYGKGIHAHATPQCQINQVKFKFQSS NRVWKKDRTTIIGKFACTALLPVNDREKMVCLPEPVNLQASVTVSCDLKIACVTRTRPL EQKLISEEDLAANDILDYKDDDDKV</p>

 Tel: 1-631-559-9269 1-516-512-3133

 Email: info@creative-biomart.com  Fax: 1-631-938-8127

 45-1 Ramsey Road, Shirley, NY 11967, USA

Purity	> 80% as determined by SDS-PAGE and Coomassie blue staining
Stability	Stable for 3 months from receipt of products under proper storage and handling conditions.
Storage	Store at -80 centigrade. Avoid repeated freeze-thaw cycles.
Concentration	50 µg/mL as determined by BCA
Storage Buffer	100 mM glycine, 25 mM Tris-HCl, pH 7.3.

GENE INFORMATION

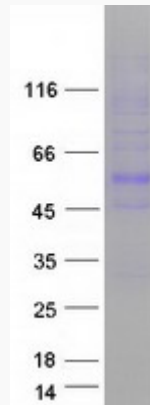
Gene Name	PLA1A phospholipase A1 member A [Homo sapiens (human)]
Official Symbol	PLA1A
Synonyms	PLA1A; phospholipase A1 member A; ps PLA1; phosphatidylserine-specific phospholipase A1alpha; PSPLA1; PS-PLA1;
Gene ID	51365
mRNA Refseq	NM_015900
Protein Refseq	NP_056984
MIM	607460
UniProt ID	Q53H76

 Tel: 1-631-559-9269 1-516-512-3133

 Email: info@creative-biomart.com  Fax: 1-631-938-8127

 45-1 Ramsey Road, Shirley, NY 11967, USA

SDS-PAGE



 Tel: 1-631-559-9269 1-516-512-3133

 Email: info@creative-biomart.com  Fax: 1-631-938-8127

 45-1 Ramsey Road, Shirley, NY 11967, USA