

Recombinant Human PLA1A Protein (Leu309-Lys452), N-His tagged

Cat. No. PLA1A-4831H Lot. No. (See product label)

SPECIFICATION

Product Overview	Recombinant human PLA1A (Leu309-Lys452) fused with the N-His tag was expressed in E. coli.
Species	Human
Source	E.coli
ProteinLength	Leu309-Lys452
Form	Lyophilized powder/frozen liquid
Molecular Mass	18.55 kDa
Purity	>90% as determined by SDS-PAGE.
Notes	For research use only.
Storage	Use a manual defrost freezer and avoid repeated freeze thaw cycles. Store at 2 to 8 centigrade for one week. Store at -20 to -80 centigrade for twelve months from the date of receipt.
Storage Buffer	0.01M PBS, pH 7.4, 0.02% NLS
Reconstitution	Reconstitute in sterile water for a stock solution.

 Tel: 1-631-559-9269 1-516-512-3133

 Email: info@creative-biomart.com  Fax: 1-631-938-8127

 45-1 Ramsey Road, Shirley, NY 11967, USA

Shipping They are shipped out with dry ice/blue ice unless customers require otherwise.

GENE INFORMATION

Gene Name PLA1A phospholipase A1 member A [Homo sapiens (human)]

Official Symbol PLA1A

Synonyms PLA1A; phospholipase A1 member A; ps PLA1; phosphatidylserine-specific phospholipase A1alpha; PSPLA1; PS-PLA1;

Gene ID 51365

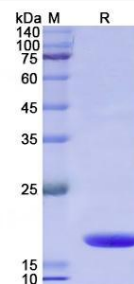
mRNA Refseq NM_001206960

Protein Refseq NP_001193889

MIM 607460

UniProt ID Q53H76

SDS-PAGE



 Tel: 1-631-559-9269 1-516-512-3133

 Email: info@creative-biomart.com  Fax: 1-631-938-8127

 45-1 Ramsey Road, Shirley, NY 11967, USA