

Recombinant Full Length Human PLA2G10 Protein, C-Flag-tagged

Cat. No. PLA2G10-103HFL **Lot. No.** (See product label)

SPECIFICATION

Product Overview	Recombinant Full Length Human PLA2G10 Protein, fused to Flag-tag at C-terminus, was expressed in Mammalian cells.
Species	Human
Source	Mammalian Cells
Description	This gene encodes a member of the phospholipase A2 family of proteins. Alternative splicing results in multiple transcript variants, at least one of which encodes a preproprotein that is proteolytically processed to generate the mature enzyme. This calcium-dependent enzyme hydrolyzes glycerophospholipids to produce free fatty acids and lysophospholipids. In one example, this enzyme catalyzes the release of arachidonic acid from cell membrane phospholipids, thus playing a role in the production of various inflammatory lipid mediators, such as prostaglandins. The encoded protein may promote the survival of breast cancer cells through its role in lipid metabolism.
Form	25 mM Tris HCl, pH 7.3, 100 mM glycine, 10% glycerol.
Molecular Mass	18 kDa
AA Sequence	MGPLPVCLPIMLLLLLPSLLLLLLLPGPSGEASRILRVHRRGILELAGTVGCVGP RTP IAYMKYGCFCG LGGHGQPRDAIDWCCHGHDCCYTRAE EAGCSPKTERYSWQCVN QSVLCGPAENKCKQELLCKDQEIANCL

 Tel: 1-631-559-9269 1-516-512-3133

 Email: info@creative-biomart.com  Fax: 1-631-938-8127

 45-1 Ramsey Road, Shirley, NY 11967, USA

AQTEYNLKYLFPQFLCEPDSPKCDTRTRPLEQKLISEEDLAANDILDYKDDDDKV

Purity > 80% as determined by SDS-PAGE and Coomassie blue staining.

Stability Stable for 12 months from the date of receipt of the product under proper storage and handling conditions. Avoid repeated freeze-thaw cycles.

Storage Store at -80 centigrade.

Concentration >50 ug/mL as determined by microplate BCA method.

Preparation Recombinant protein was captured through anti-DDK affinity column followed by conventional chromatography steps.

Protein Families Druggable Genome, Secreted Protein, Transmembrane

Protein Pathways alpha-Linolenic acid metabolism, Arachidonic acid metabolism, Ether lipid metabolism, Fc epsilon RI signaling pathway, Glycerophospholipid metabolism, GnRH signaling pathway, Linoleic acid metabolism, Long-term depression, MAPK signaling pathway, Metabolic pathways, Vascular smooth muscle contraction, VEGF signaling pathway

Full Length Full L.

GENE INFORMATION

Gene Name PLA2G10 phospholipase A2 group X [Homo sapiens (human)]

Official Symbol PLA2G10

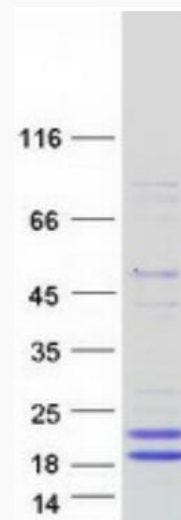
Synonyms SPLA2; GXPLA2; GXPLA2; sPLA2-X

 Tel: 1-631-559-9269 1-516-512-3133

 Email: info@creative-biomart.com  Fax: 1-631-938-8127

 45-1 Ramsey Road, Shirley, NY 11967, USA

Gene ID	8399
mRNA Refseq	NM_003561.3
Protein Refseq	NP_003552.1
MIM	603603
UniProt ID	O15496



Coomassie blue staining of purified PLA2G10 protein.

Tel: 1-631-559-9269 1-516-512-3133

Email: info@creative-biomart.com Fax: 1-631-938-8127

45-1 Ramsey Road, Shirley, NY 11967, USA