

Recombinant Human PLA2G10 protein, His-GST&Myc-tagged

Cat. No. PLA2G10-307H Lot. No. (See product label)

SPECIFICATION

Product Overview	Recombinant Human PLA2G10 protein(O15496)(43-165aa), fused with N-terminal His and GST tag and C-terminal Myc tag, was expressed in E.coli.
Species	Human
Source	E.coli
ProteinLength	43-165aa
Form	If the delivery form is liquid, the default storage buffer is Tris/PBS-based buffer, 5%-50% glycerol. If the delivery form is lyophilized powder, the buffer before lyophilization is Tris/PBS-based buffer, 6% Trehalose, pH 8.0.
Molecular Mass	48.8 kDa
Purity	Greater than 85% as determined by SDS-PAGE.
Storage	Store at -20°C/-80°C upon receipt, aliquoting is necessary for mutiple use. Avoid repeated freeze-thaw cycles.
Reconstitution	We recommend that this vial be briefly centrifuged prior to opening to bring the contents to the bottom. Please reconstitute protein in deionized sterile water to a concentration of 0.1-1.0 mg/mL. We recommend to add 5-50% of glycerol (final concentration) and aliquot for long-term storage at -20°C/-80°C.

 Tel: 1-631-559-9269 1-516-512-3133

 Email: info@creative-biomart.com  Fax: 1-631-938-8127

 45-1 Ramsey Road, Shirley, NY 11967, USA

AA Sequence GILELAGTVGCVGPRTPIAYMKYGCFCGLGGHGQPRDAIDWCCHGHDCCYTRAE
AGCSPKTERYSWQCVNQSVLCGPAENKQCQELLCKCDQEIANCLAQTEYNLKYLFYP
QFLCEPDSPKCD

GENE INFORMATION

Gene Name PLA2G10 phospholipase A2, group X [Homo sapiens]

Official Symbol PLA2G10

Synonyms PLA2G10; phospholipase A2, group X; group 10 secretory phospholipase A2; GXPLA2; sPLA2-X; GX sPLA2; group X secretory phospholipase A2; phosphatidylcholine 2-acylhydrolase 10; SPLA2; GXsPLA2; MGC119918; MGC119919; MGC133367;

Gene ID 8399

mRNA Refseq NM_003561

Protein Refseq NP_003552

MIM 603603

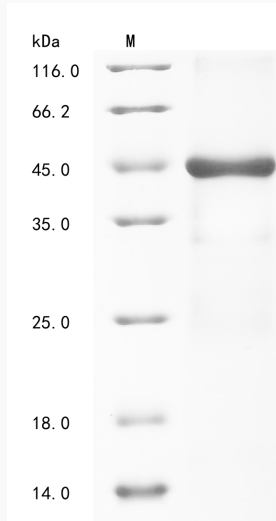
UniProt ID O15496

 Tel: 1-631-559-9269 1-516-512-3133

 Email: info@creative-biomart.com  Fax: 1-631-938-8127

 45-1 Ramsey Road, Shirley, NY 11967, USA

SDS-PAGE



 Tel: 1-631-559-9269 1-516-512-3133

 Email: info@creative-biomart.com  Fax: 1-631-938-8127

 45-1 Ramsey Road, Shirley, NY 11967, USA