

Recombinant Human PLA2G10 Protein (Glu32-Asp165), N-His tagged

Cat. No. PLA2G10-5207H Lot. No. (See product label)

SPECIFICATION

Product Overview	Recombinant human PLA2G10 (Glu32-Asp165) fused with the N-His tag was expressed in E. coli.
Species	Human
Source	E.coli
ProteinLength	Glu32-Asp165
Form	Lyophilized powder/frozen liquid
Molecular Mass	17.32 kDa
Purity	>90% as determined by SDS-PAGE.
Notes	For research use only.
Storage	Use a manual defrost freezer and avoid repeated freeze thaw cycles. Store at 2 to 8 centigrade for one week. Store at -20 to -80 centigrade for twelve months from the date of receipt.
Storage Buffer	0.01M PBS, pH 7.4, 0.02% NLS
Reconstitution	Reconstitute in sterile water for a stock solution.

 Tel: 1-631-559-9269 1-516-512-3133

 Email: info@creative-biomart.com  Fax: 1-631-938-8127

 45-1 Ramsey Road, Shirley, NY 11967, USA

Shipping They are shipped out with dry ice/blue ice unless customers require otherwise.

GENE INFORMATION

Gene Name PLA2G10 phospholipase A2, group X [Homo sapiens (human)]

Official Symbol PLA2G10

Synonyms PLA2G10; phospholipase A2, group X; group 10 secretory phospholipase A2; GXPLA2; sPLA2-X; GX sPLA2; group X secretory phospholipase A2; phosphatidylcholine 2-acylhydrolase 10; SPLA2; GXsPLA2; MGC119918; MGC119919; MGC133367;

Gene ID 8399

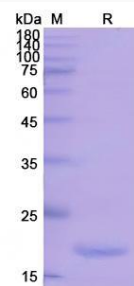
mRNA Refseq NM_003561

Protein Refseq NP_003552

MIM 603603

UniProt ID O15496

SDS-PAGE



 Tel: 1-631-559-9269 1-516-512-3133

 Email: info@creative-biomart.com  Fax: 1-631-938-8127

 45-1 Ramsey Road, Shirley, NY 11967, USA