

Recombinant Human PLA2G12A Protein (23-185 aa), His-tagged

Cat. No. PLA2G12A-1709H **Lot. No.** (See product label)

SPECIFICATION

Product Overview	Recombinant Human PLA2G12A Protein (23-185 aa) is produced by Yeast expression system. This protein is fused with a 6xHis tag at the N-terminal. Research Area: Metabolism. Protein Description: Partial.
Species	Human
Source	Yeast
ProteinLength	23-185 aa
Description	PA2 catalyzes the calcium-dependent hydrolysis of the 2-acyl groups in 3-sn-phosphoglycerides. Does not exhibit detectable activity toward sn-2-arachidonoyl- or linoleoyl-phosphatidylcholine or -phosphatidylethanolamine.
Form	Tris-based buffer,50% glycerol
Molecular Mass	20.3 kDa
AA Sequence	QEQAQTDDWRATLKTIRNGVHKIDTYLNAALDLLGGEDGLCQYKCS DGSKPFP RYGYKPSPPNGCGSPLFGVHLNIGIPSLTKCCNQHDRCYETCGKSKNDCDEEFQYCLSKI CRDVQKTLGLTQHVQACETTVELLFDSVIHLGCKPYLDSQRAACRCHYEE
Purity	> 90% as determined by SDS-PAGE.

 Tel: 1-631-559-9269 1-516-512-3133

 Email: info@creative-biomart.com  Fax: 1-631-938-8127

 45-1 Ramsey Road, Shirley, NY 11967, USA

Notes	Repeated freezing and thawing is not recommended. Store working aliquots at 4 centigrade for up to one week.
Storage	The shelf life is related to many factors, storage state, buffer ingredients, storage temperature and the stability of the protein itself. Generally, the shelf life of liquid form is 6 months at -20 centigrade/-80 centigrade. The shelf life of lyophilized form is 12 months at -20 centigrade/-80 centigrade.
Concentration	A hardcopy of COA with reconstitution instruction is sent along with the products.

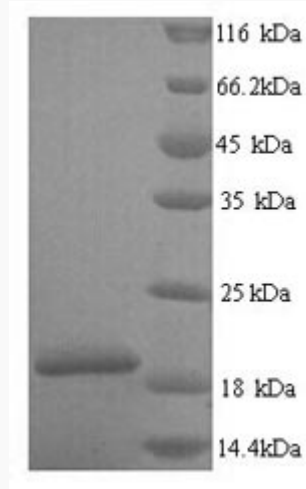
GENE INFORMATION

Gene Name	PLA2G12A phospholipase A2, group XIIA [Homo sapiens]
Official Symbol	PLA2G12A
Synonyms	PLA2G12A; sPLA2-XII; GXII sPLA2; GXII; ROSSY; PLA2G12;
Gene ID	81579
mRNA Refseq	NM_030821
Protein Refseq	NP_110448
MIM	611652
UniProt ID	Q9BZM1

 Tel: 1-631-559-9269 1-516-512-3133

 Email: info@creative-biomart.com  Fax: 1-631-938-8127

 45-1 Ramsey Road, Shirley, NY 11967, USA



(Tris-Glycine gel) Discontinuous SDS-PAGE (reduced) with 5% enrichment gel and 15% separation gel.

 Tel: 1-631-559-9269 1-516-512-3133

 Email: info@creative-biomart.com  Fax: 1-631-938-8127

 45-1 Ramsey Road, Shirley, NY 11967, USA