

# Recombinant Full Length Human PLA2G12A Protein, C-Flag-tagged

**Cat. No.** PLA2G12A-207HFL    **Lot. No.** (See product label)

## SPECIFICATION

<b>Product Overview</b>	Recombinant Full Length Human PLA2G12A Protein, fused to Flag-tag at C-terminus, was expressed in Mammalian cells.
<b>Species</b>	Human
<b>Source</b>	Mammalian Cells
<b>Description</b>	Secreted phospholipase A2 (sPLA2) enzymes liberate arachidonic acid from phospholipids for production of eicosanoids and exert a variety of physiologic and pathologic effects. Group XII sPLA2s, such as PLA2G12A, have relatively low specific activity and are structurally and functionally distinct from other sPLA2s.
<b>Form</b>	25 mM Tris HCl, pH 7.3, 100 mM glycine, 10% glycerol.
<b>Molecular Mass</b>	20.9 kDa
<b>AA Sequence</b>	MALLSRPALTL LLLLLMAAVVRCQEQAQT TDWRATLKTIRNGVHKIDTYLNAALDLLGG EDGLCQYKCS DG SKPFPRYGYKPSPPNGCGSPLFGVHLNIGIPSLTKCCNQHDR C YETCGKSKNDCDEEFQYCLSKICRDVQ KTLGLTQHVQACETTVELLFDSVIHLGCKPYLDSQRAACRCHYEEKTDLTRTRPLEQ KLISEEDLAANDILDYKDDDDKV
<b>Purity</b>	> 80% as determined by SDS-PAGE and Coomassie blue staining.

 Tel: 1-631-559-9269    1-516-512-3133

 Email: [info@creative-biomart.com](mailto:info@creative-biomart.com)     Fax: 1-631-938-8127

 45-1 Ramsey Road, Shirley, NY 11967, USA

<b>Stability</b>	Stable for 12 months from the date of receipt of the product under proper storage and handling conditions. Avoid repeated freeze-thaw cycles.
<b>Storage</b>	Store at -80 centigrade.
<b>Concentration</b>	>50 ug/mL as determined by microplate BCA method.
<b>Preparation</b>	Recombinant protein was captured through anti-DDK affinity column followed by conventional chromatography steps.
<b>Protein Families</b>	Druggable Genome, Secreted Protein
<b>Protein Pathways</b>	alpha-Linolenic acid metabolism, Arachidonic acid metabolism, Ether lipid metabolism, Fc epsilon RI signaling pathway, Glycerophospholipid metabolism, GnRH signaling pathway, Linoleic acid metabolism, Long-term depression, MAPK signaling pathway, Metabolic pathways, Vascular smooth muscle contraction, VEGF signaling pathway
<b>Full Length</b>	Full L.

## GENE INFORMATION

<b>Gene Name</b>	PLA2G12A phospholipase A2 group XIIA [ Homo sapiens (human) ]
<b>Official Symbol</b>	PLA2G12A
<b>Synonyms</b>	GXII; ROSSY; PLA2G12
<b>Gene ID</b>	81579
<b>mRNA Refseq</b>	NM_030821.5

 Tel: 1-631-559-9269 1-516-512-3133

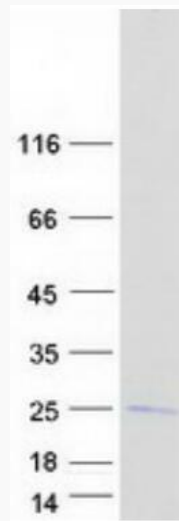
 Email: [info@creative-biomart.com](mailto:info@creative-biomart.com)  Fax: 1-631-938-8127

 45-1 Ramsey Road, Shirley, NY 11967, USA

**Protein Refseq** NP\_110448.2

**MIM** 611652

**UniProt ID** Q9BZM1



Coomassie blue staining of purified PLA2G12A protein.

 Tel: 1-631-559-9269 1-516-512-3133

 Email: [info@creative-biomart.com](mailto:info@creative-biomart.com)  Fax: 1-631-938-8127

 45-1 Ramsey Road, Shirley, NY 11967, USA