

Recombinant Human PLA2G1B protein, His-tagged

Cat. No. PLA2G1B-171H **Lot. No.** (See product label)

SPECIFICATION

Product Overview	Recombinant Human PLA2G1B (Ala23-Ser148) protein was fused to His-tag at C-terminus and expressed in human 293 cells (HEK293).
Species	Human
Source	HEK293
ProteinLength	Ala23-Ser148
Description	Phosphatidylcholine 2-acylhydrolase 1B (PLA2G1B) is also known as Phospholipase A2 (PLA2), PLA2A, PPLA2, which belongs to the phospholipase A2 family. PLA2G1B is activated by trypsin cleavage in the duodenum and can also be activated by thrombin or autocatalytically. PLA2 catalyzes the calcium-dependent hydrolysis of the 2-acyl groups in 3-sn-phosphoglycerides, this releases glycerophospholipids and arachidonic acid that serve as the precursors of signal molecules.
Predicted N Terminal	Ala23
Form	Lyophilized from 0.22 µm filtered solution in 20 mM Hepes, 150 mM NaCl, pH7.0, 10% trehalose.
Molecular Mass	The protein has a calculated MW of 15.0 kDa. The protein migrates as 19 kDa under reducing (R) condition (SDS-PAGE).
Endotoxin	Less than 1.0 EU per µg by the LAL method.

 Tel: 1-631-559-9269 1-516-512-3133

 Email: info@creative-biomart.com  Fax: 1-631-938-8127

 45-1 Ramsey Road, Shirley, NY 11967, USA

Purity	>95% as determined by SDS-PAGE.
Storage	<p>For long term storage, the product should be stored at lyophilized state at -20 centigrade or lower.</p> <p>Please avoid repeated freeze-thaw cycles.</p> <p>This product is stable after storage at:</p> <p>-20 to -70 centigrade for 12 months in lyophilized state;</p> <p>-70 centigrade for 3 months under sterile conditions after reconstitution.</p>
Reconstitution	It is recommended that sterile water be added to the vial to prepare a stock solution of 0.2 ug/ul. Centrifuge the vial at 4°C before opening to recover the entire contents.

GENE INFORMATION

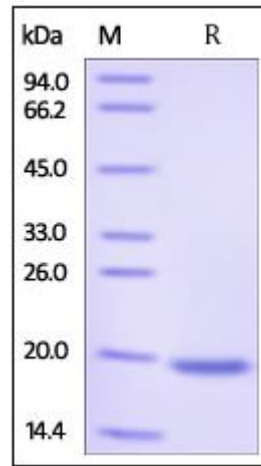
Gene Name	PLA2G1B
Official Symbol	PLA2G1B
Synonyms	PLA2G1B; phospholipase A2, group IB (pancreas); PLA2, PLA2A, PPLA2; phospholipase A2; group IB phospholipase A2; phosphatidylcholine 2-acylhydrolase 1B; PLA2; PLA2A; PPLA2; MGC119834; MGC119835
Gene ID	5319
mRNA Refseq	NM_000928
Protein Refseq	NP_000919
MIM	172410
UniProt ID	P04054

 Tel: 1-631-559-9269 1-516-512-3133

 Email: info@creative-biomart.com  Fax: 1-631-938-8127

 45-1 Ramsey Road, Shirley, NY 11967, USA

**SDS-PAGE of
PLA2G1B-171H**



Human PLA2G1B, His Tag on SDS-PAGE under reducing (R) condition. The gel was stained overnight with Coomassie Blue. The purity of the protein is greater than 95%.

 Tel: 1-631-559-9269 1-516-512-3133

 Email: info@creative-biomart.com  Fax: 1-631-938-8127

 45-1 Ramsey Road, Shirley, NY 11967, USA