

Recombinant Human PLA2G1B Protein, MYC/DDK-tagged, C13 and N15-labeled

Cat. No. PLA2G1B-291H **Lot. No.** (See product label)

SPECIFICATION

Product Overview

PLA2G1B MS Standard C13 and N15-labeled recombinant protein (NP_000919) with a C-terminal MYC/DDK tag, was expressed in HEK293 cells.

Species

Human

Source

HEK293

Description

This gene encodes a secreted member of the phospholipase A2 (PLA2) class of enzymes, which is produced by the pancreatic acinar cells. The encoded calcium-dependent enzyme catalyzes the hydrolysis of the sn-2 position of membrane glycerophospholipids to release arachidonic acid (AA) and lysophospholipids. AA is subsequently converted by downstream metabolic enzymes to several bioactive lipophilic compounds (eicosanoids), including prostaglandins (PGs) and leukotrienes (LTs). The enzyme may be involved in several physiological processes including cell contraction, cell proliferation and pathological response. [provided by RefSeq, Aug 2013]

Molecular Mass

16.2 kDa

AA Sequence

MKLLVLAVLLTVAADSGISPRVWQFRKMIKCVIPGSDPFLEYNNYGCYCGLGGSG
TPVDELDKCCQTHDNCYDQAKKLDSCKFLLDNPYHTYSSCSGSAITCSSKNKEC
EAFICNCDRNAAICFSKAPYINKAHKNLDTKKYCQSTRTRPLEQKLISEEDLAANDILD
YKDDDDKV

 Tel: 1-631-559-9269 1-516-512-3133

 Email: info@creative-biomart.com  Fax: 1-631-938-8127

 45-1 Ramsey Road, Shirley, NY 11967, USA

Purity	> 80% as determined by SDS-PAGE and Coomassie blue staining
Stability	Stable for 3 months from receipt of products under proper storage and handling conditions.
Storage	Store at -80 centigrade. Avoid repeated freeze-thaw cycles.
Concentration	50 µg/mL as determined by BCA
Storage Buffer	100 mM glycine, 25 mM Tris-HCl, pH 7.3.

GENE INFORMATION

Gene Name	PLA2G1B phospholipase A2, group IB (pancreas) [Homo sapiens (human)]
Official Symbol	PLA2G1B
Synonyms	PLA2G1B; phospholipase A2, group IB (pancreas); PLA2, PLA2A, PPLA2; phospholipase A2; group IB phospholipase A2; phosphatidylcholine 2-acylhydrolase 1B; PLA2; PLA2A; PPLA2; MGC119834; MGC119835;
Gene ID	5319
mRNA Refseq	NM_000928
Protein Refseq	NP_000919
MIM	172410
UniProt ID	P04054

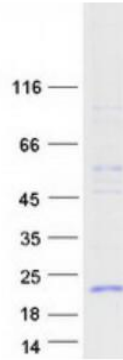
 Tel: 1-631-559-9269 1-516-512-3133

 Email: info@creative-biomart.com  Fax: 1-631-938-8127

 45-1 Ramsey Road, Shirley, NY 11967, USA



SDS-PAGE



Tel: 1-631-559-9269 1-516-512-3133

Email: info@creative-biomart.com Fax: 1-631-938-8127

45-1 Ramsey Road, Shirley, NY 11967, USA