

Recombinant Human PLA2G1B Protein (Ala23-Ser148), C-His tagged

Cat. No. PLA2G1B-4921H Lot. No. (See product label)

SPECIFICATION

Product Overview	Recombinant human PLA2G1B (Ala23-Ser148) fused with the C-terminal His tag was expressed in Mammalian cells.
Species	Human
Source	Mammalian Cells
ProteinLength	Ala23-Ser148
Form	Lyophilized powder/frozen liquid
Molecular Mass	13.97 kDa
Purity	>90% as determined by SDS-PAGE.
Notes	For research use only.
Storage	Use a manual defrost freezer and avoid repeated freeze thaw cycles. Store at 2 to 8 centigrade for one week. Store at -20 to -80 centigrade for twelve months from the date of receipt.
Storage Buffer	Supplied as solution form in PBS or lyophilized from PBS.
Reconstitution	Reconstitute in sterile water for a stock solution.

 Tel: 1-631-559-9269 1-516-512-3133

 Email: info@creative-biomart.com  Fax: 1-631-938-8127

 45-1 Ramsey Road, Shirley, NY 11967, USA

Shipping They are shipped out with dry ice/blue ice unless customers require otherwise.

GENE INFORMATION

Gene Name PLA2G1B phospholipase A2, group IB (pancreas) [Homo sapiens (human)]

Official Symbol PLA2G1B

Synonyms PLA2G1B; phospholipase A2, group IB (pancreas); PLA2, PLA2A, PPLA2; phospholipase A2; group IB phospholipase A2; phosphatidylcholine 2-acylhydrolase 1B; PLA2; PLA2A; PPLA2; MGC119834; MGC119835;

Gene ID 5319

mRNA Refseq NM_000928

Protein Refseq NP_000919

MIM 172410

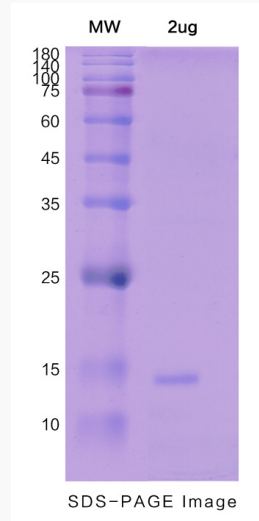
UniProt ID P04054

 Tel: 1-631-559-9269 1-516-512-3133

 Email: info@creative-biomart.com  Fax: 1-631-938-8127

 45-1 Ramsey Road, Shirley, NY 11967, USA

SDS-PAGE



 Tel: 1-631-559-9269 1-516-512-3133

 Email: info@creative-biomart.com  Fax: 1-631-938-8127

 45-1 Ramsey Road, Shirley, NY 11967, USA