

## Recombinant Human, PLA2G2A His-tagged

Cat. No. PLA2G2A-1036H Lot. No. (See product label)

### SPECIFICATION

<b>Product Overview</b>	Total 183AA. MW: 20.6kDa (calculated). N-Terminal His-tag, 16 extra AA (highlighted).
<b>Species</b>	Human
<b>Source</b>	E.coli
<b>Description</b>	Phospholipase A2, membrane associated is an enzyme that in humans is encoded by the PLA2G2A gene.
<b>Form</b>	Filtered (0.4 um) and lyophilized in 0.5 mg/ml in 0.05M Acetate buffer pH 4.
<b>Research topic</b>	Secreted phospholipases A2
<b>Purity</b>	>95%
<b>Reconstitution</b>	Add 0.1M Acetate buffer pH4 to prepare a working stock solution of approximately 0.5 mg/ml and let the lyophilized pellet dissolve completely. For conversion into higher pH value, we recommend intensive dilution by relevant buffer to a concentration of 10 ug/ml. In higher concentrations the solubility of this antigen is limited. Product is not sterile! Please filter the product by an appropriate sterile filter before using it in the cell culture.
<b>Applications</b>	Western blotting

 Tel: 1-631-559-9269 1-516-512-3133

 Email: [info@creative-biomart.com](mailto:info@creative-biomart.com)  Fax: 1-631-938-8127

 45-1 Ramsey Road, Shirley, NY 11967, USA

<b>QualityControl Test</b>	BCA to determine quantity of the protein; SDS PAGE to determine purity of the protein.
<b>Sequences of aminoacids</b>	MRGSHHHHHH GMASHMQEQA QTTDWRATLK TIRNGVHKID TYLNAALDLL GGEDGLCQYK CSDGSKPFPR YGYKPSPPNG CGSPLFGVHL NIGIPSLTKC CNQHDCRYET CGKSKNDCDE EFQYCLSKIC RDVQKTLGLT QHVQACETTV ELLFDSVIHL GCKPYLDSQR AACRCHYEK TDL
<b>Storage</b>	Store lyophilized protein at -20°C. Lyophilized protein remains stable until the expiry date when stored at -20°C. Aliquot reconstituted protein to avoid repeated freezing/thawing cycles and store at -80°C for long term storage. Reconstituted protein can be stored at 4°C for a limited period of time; it does not show any change after one week at 4°C.

## GENE INFORMATION

<b>Gene Name</b>	PLA2G2A phospholipase A2, group IIA (platelets, synovial fluid) [ Homo sapiens ]
<b>Official Symbol</b>	PLA2G2A
<b>Synonyms</b>	PLA2G2A; phospholipase A2, group IIA (platelets, synovial fluid); MOM1; PLA2; PLA2B; PLA2L; PLA2S; PLAS1; sPLA2; OTTHUMP0000002786; Phospholipase A2, membrane associated; EC=3.1.1.4; Group IIA phospholipase A2; GIIC sPLA2; Non-pancreatic secretory phospholipase A2; NPS-PLA2; Phosphatidylcholine 2-acylhydrolase 2A; RASF-A; EC 3.1.1.4
<b>Gene ID</b>	5320
<b>mRNA Refseq</b>	NM_000300
<b>Protein Refseq</b>	NP_000291

 Tel: 1-631-559-9269 1-516-512-3133

 Email: [info@creative-biomart.com](mailto:info@creative-biomart.com)  Fax: 1-631-938-8127

 45-1 Ramsey Road, Shirley, NY 11967, USA

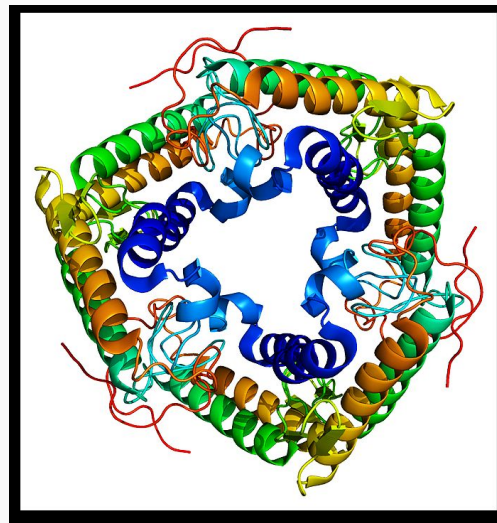
**MIM** 172411

**Uniprot ID** P14555

**Chromosome Location** 1p35

**Function** calcium ion binding; calcium-dependent phospholipase A2 activity; hydrolase activity; phospholipase A2 activity; phospholipid binding

**PLA2G2Aprotein**



 Tel: 1-631-559-9269 1-516-512-3133

 Email: [info@creative-biomart.com](mailto:info@creative-biomart.com)  Fax: 1-631-938-8127

 45-1 Ramsey Road, Shirley, NY 11967, USA