

# Active Recombinant Human PLA2G2A Protein (1-124; variant N1A)

**Cat. No.** PLA2G2A-12H    **Lot. No.** (See product label)

## SPECIFICATION

<b>Product Overview</b>	Active recombinant human sPLA2 (Type IIA) protein (1-124; variant N1A) without tag was expressed in E. coli
<b>Species</b>	Human
<b>Source</b>	E.coli
<b>ProteinLength</b>	1-124; variant N1A
<b>Description</b>	The protein encoded by this gene is a member of the phospholipase A2 family (PLA2). PLA2s constitute a diverse family of enzymes with respect to sequence, function, localization, and divalent cation requirements. This gene product belongs to group II, which contains secreted form of PLA2, an extracellular enzyme that has a low molecular mass and requires calcium ions for catalysis. It catalyzes the hydrolysis of the sn-2 fatty acid acyl ester bond of phosphoglycerides, releasing free fatty acids and lysophospholipids, and thought to participate in the regulation of the phospholipid metabolism in biomembranes. Several alternatively spliced transcript variants with different 5' UTRs have been found for this gene.
<b>Molecular Mass</b>	13.9 kDa
<b>Purity</b>	≥ 85 % estimated by SDS-PAGE
<b>Unit Definition</b>	One unit is defined as the amount of enzyme required to hydrolyze 1 nmol of

 Tel: 1-631-559-9269    1-516-512-3133

 Email: [info@creative-biomart.com](mailto:info@creative-biomart.com)     Fax: 1-631-938-8127

 45-1 Ramsey Road, Shirley, NY 11967, USA

diheptanoyl thio-PC per minute at 37 centigrade in 25 mM Tris-HCl, pH 7.5, containing 10 mM calcium chloride, 100 mM potassium chloride, 0.3 mM Triton X-100, 0.44 mM DTNB, and 1.48 mM diheptanoyl thio-PC.

<b>Stability</b>	≥ 1 year
<b>Storage</b>	At -80 centigrade
<b>Storage Buffer</b>	50 mM Tris-HCl, pH 7.6, with 100 mM sodium chloride and 10 mM calcium chloride.
<b>Shipping</b>	Dry ice in continental US; may vary elsewhere

## GENE INFORMATION

<b>Gene Name</b>	PLA2G2A phospholipase A2 group IIA [ Homo sapiens (human) ]
<b>Official Symbol</b>	PLA2G2A
<b>Synonyms</b>	PLA2G2A; phospholipase A2 group IIA; MOM1; PLA2; PLA2B; PLA2L; PLA2S; PLAS1; sPLA2; phospholipase A2, membrane associated; GIIC sPLA2; NPS-PLA2; group IIA phospholipase A2; non-pancreatic secretory phospholipase A2; phosphatidylcholine 2-acylhydrolase 2A; phospholipase A2, group IIA (platelets, synovial fluid); EC 3.1.1.4
<b>Gene ID</b>	5320
<b>mRNA Refseq</b>	NM_000300
<b>Protein Refseq</b>	NP_000291
<b>MIM</b>	172411

 Tel: 1-631-559-9269 1-516-512-3133

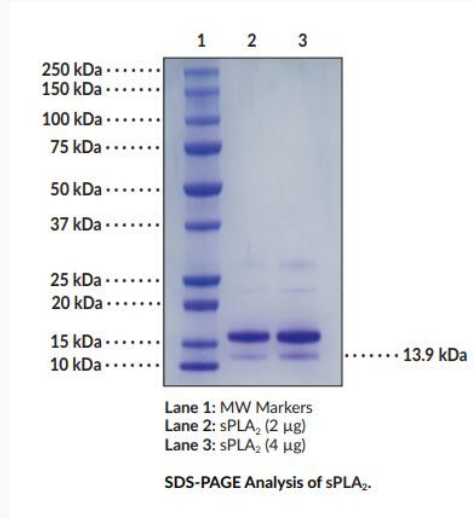
 Email: [info@creative-biomart.com](mailto:info@creative-biomart.com)  Fax: 1-631-938-8127

 45-1 Ramsey Road, Shirley, NY 11967, USA

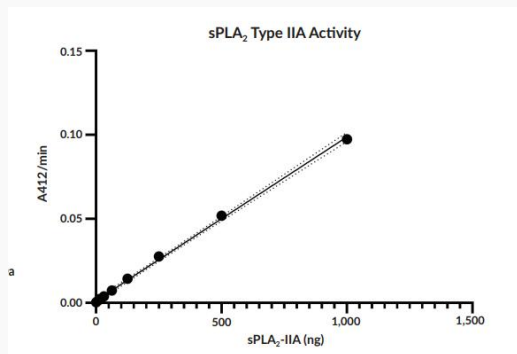
UniProt ID

P14555

SDS-PAGE



Activity



Tel: 1-631-559-9269 1-516-512-3133

Email: [info@creative-biomart.com](mailto:info@creative-biomart.com) Fax: 1-631-938-8127

45-1 Ramsey Road, Shirley, NY 11967, USA