

Recombinant Rat PLA2G2A Protein (22-146 aa), His-tagged

Cat. No. PLA2G2A-1582R Lot. No. (See product label)

SPECIFICATION

Product Overview	Recombinant Rat PLA2G2A Protein (22-146 aa) is produced by Yeast expression system. This protein is fused with a 6xHis tag at the N-terminal. Protein Description: Full Length of Mature Protein.
Species	Rat
Source	Yeast
ProteinLength	22-146 aa
Description	Thought to participate in the regulation of the phospholipid metabolism in biomembranes including eicosanoid biosynthesis. Catalyzes the calcium-dependent hydrolysis of the 2-acyl groups in 3-sn-phosphoglycerides.
Form	Tris-based buffer,50% glycerol
Molecular Mass	16.1 kDa
AA Sequence	SLLEFGQMILFKTGKRADVSYGFYGCHCGVGGRGSPKDATDWCCVTHDCCYNRLE KRGCGTKFLTYKFSYRGGQISCSTNQDSCRKQLCQCDKAAAECEFARNKKSYSYSLKY QFYPNKFCKGKTPSC
Purity	> 90% as determined by SDS-PAGE.
Notes	Repeated freezing and thawing is not recommended. Store working aliquots at 4

 Tel: 1-631-559-9269 1-516-512-3133

 Email: info@creative-biomart.com  Fax: 1-631-938-8127

 45-1 Ramsey Road, Shirley, NY 11967, USA

centigrade for up to one week.

Storage

The shelf life is related to many factors, storage state, buffer ingredients, storage temperature and the stability of the protein itself. Generally, the shelf life of liquid form is 6 months at -20 centigrade/-80 centigrade. The shelf life of lyophilized form is 12 months at -20 centigrade/-80 centigrade.

Concentration

A hardcopy of COA with reconstitution instruction is sent along with the products.

GENE INFORMATION

Gene Name [PLa2g2a phospholipase A2, group IIA \(platelets, synovial fluid\) \[Rattus norvegicus \]](#)

Official Symbol [PLA2G2A](#)

Synonyms PLA2G2A; group IIA phospholipase A2; sPLA2;

Gene ID [29692](#)

mRNA Refseq [NM_031598](#)

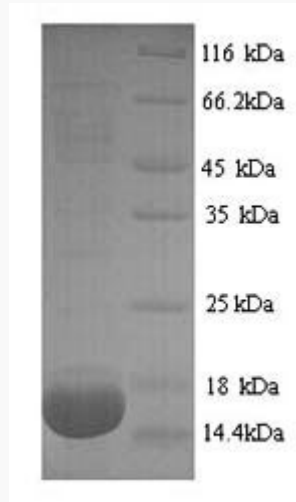
Protein Refseq [NP_113786](#)

UniProt ID [P14423](#)

 Tel: 1-631-559-9269 1-516-512-3133

 Email: info@creative-biomart.com  Fax: 1-631-938-8127

 45-1 Ramsey Road, Shirley, NY 11967, USA



(Tris-Glycine gel) Discontinuous SDS-PAGE (reduced) with 5% enrichment gel and 15% separation gel.

Tel: 1-631-559-9269 1-516-512-3133

Email: info@creative-biomart.com Fax: 1-631-938-8127

45-1 Ramsey Road, Shirley, NY 11967, USA