

Recombinant Human PLA2G2A Protein, Myc/DDK-tagged, C13 and N15-labeled

Cat. No. PLA2G2A-3541H Lot. No. (See product label)

SPECIFICATION

| | |
|-------------------------|---|
| Product Overview | PLA2G2A MS Standard C13 and N15-labeled recombinant protein (NP_000291) with a C-terminal MYC/DDK tag, was expressed in HEK293 cells. |
| Species | Human |
| Source | HEK293 |
| Description | <p>The protein encoded by this gene is a member of the phospholipase A2 family (PLA2). PLA2s constitute a diverse family of enzymes with respect to sequence, function, localization, and divalent cation requirements. This gene product belongs to group II, which contains secreted form of PLA2, an extracellular enzyme that has a low molecular mass and requires calcium ions for catalysis. It catalyzes the hydrolysis of the sn-2 fatty acid acyl ester bond of phosphoglycerides, releasing free fatty acids and lysophospholipids, and thought to participate in the regulation of the phospholipid metabolism in biomembranes. Several alternatively spliced transcript variants with different 5' UTRs have been found for this gene.</p> |
| Molecular Mass | 16.1 kDa |
| AA Sequence | MKTLVVAVIMIFGLLQAHGNLVNFHRMIKLTGKEAALS YGFY GCHCGVGGRGSPK DATDRCCVTHDCCYKRLEKRGCGTKFLSYKFSNSGSRITCAKQDSCRSQLCECDKA AATCFARNKTTYNKKYQYYSNKHCRGSTPRCTRTRPLEQKLISEEDLAANDILDYKD DDDKV |

 Tel: 1-631-559-9269 1-516-512-3133

 Email: info@creative-biomart.com  Fax: 1-631-938-8127

 45-1 Ramsey Road, Shirley, NY 11967, USA

| | |
|-----------------------|--|
| Purity | > 80% as determined by SDS-PAGE and Coomassie blue staining |
| Stability | Stable for 3 months from receipt of products under proper storage and handling conditions. |
| Storage | Store at -80 centigrade. Avoid repeated freeze-thaw cycles. |
| Concentration | 50 µg/mL as determined by BCA |
| Storage Buffer | 100 mM glycine, 25 mM Tris-HCl, pH 7.3. |

GENE INFORMATION

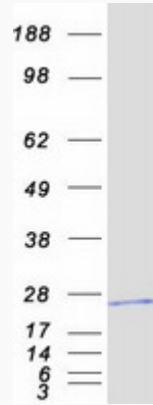
| | |
|------------------------|--|
| Gene Name | PLA2G2A phospholipase A2 group IIA [Homo sapiens (human)] |
| Official Symbol | PLA2G2A |
| Synonyms | PLA2G2A; phospholipase A2, group IIA (platelets, synovial fluid); PLA2B, PLA2L; phospholipase A2, membrane associated; NPS-PLA2; GIIC sPLA2; group IIA phospholipase A2; phosphatidylcholine 2-acylhydrolase 2A; non-pancreatic secretory phospholipase A2; MOM1; PLA2; PLA2B; PLA2L; PLA2S; PLAS1; sPLA2; |
| Gene ID | 5320 |
| mRNA Refseq | NM_000300 |
| Protein Refseq | NP_000291 |
| MIM | 172411 |
| UniProt ID | P14555 |

 Tel: 1-631-559-9269 1-516-512-3133

 Email: info@creative-biomart.com  Fax: 1-631-938-8127

 45-1 Ramsey Road, Shirley, NY 11967, USA

SDS-PAGE



 Tel: 1-631-559-9269 1-516-512-3133

 Email: info@creative-biomart.com  Fax: 1-631-938-8127

 45-1 Ramsey Road, Shirley, NY 11967, USA