

## Recombinant Human PLA2G2A protein, His-tagged

Cat. No. PLA2G2A-900H Lot. No. (See product label)

### SPECIFICATION

<b>Product Overview</b>	Recombinant Human PLA2G2A protein(NP_000291.1) (Met 1-Cys 144) was expressed in HEK293, with a polyhistidine tag at the C-terminus.
<b>Species</b>	Human
<b>Source</b>	HEK293
<b>ProteinLength</b>	1-144 aa
<b>Form</b>	Lyophilized from sterile PBS, pH 7.4.
<b>Molecular Mass</b>	The recombinant human PLA2G2A consists of 135 amino acids and predicts a molecular mass of 15.4 kDa. In SDS-PAGE under reducing conditions, rh PLA2G2A migrates as an approximately 19 kDa band due to glycosylation.
<b>Endotoxin</b>	< 1.0 EU per µg of the protein as determined by the LAL method.
<b>Purity</b>	> 97 % as determined by SDS-PAGE
<b>Storage</b>	Store it under sterile conditions at -20°C to -80°C upon receiving. Recommend to aliquot the protein into smaller quantities for optimal storage. Avoid repeated freeze-thaw cycles.
<b>Reconstitution</b>	It is recommended that sterile water be added to the vial to prepare a stock solution of 0.2 ug/ul. Centrifuge the vial at 4°C before opening to recover the entire contents.

 Tel: 1-631-559-9269 1-516-512-3133

 Email: [info@creative-biomart.com](mailto:info@creative-biomart.com)  Fax: 1-631-938-8127

 45-1 Ramsey Road, Shirley, NY 11967, USA

<b>protein Refseq-Weblink</b>	<a href="http://www.ncbi.nlm.nih.gov/protein/NP_000291.1">http://www.ncbi.nlm.nih.gov/protein/NP_000291.1</a>
<b>Unit ID</b>	P14555
<b>Unit ID-Weblink</b>	<a href="https://www.uniprot.org/uniprotkb/P14555">https://www.uniprot.org/uniprotkb/P14555</a>

## GENE INFORMATION

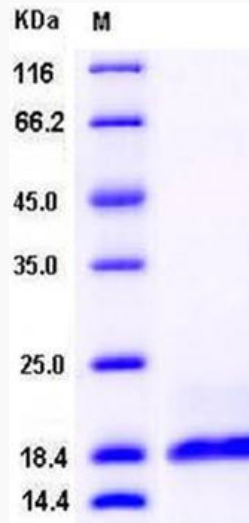
<b>Gene Name</b>	PLA2G2A phospholipase A2, group IIA (platelets, synovial fluid) [ Homo sapiens ]
<b>Official Symbol</b>	PLA2G2A
<b>Synonyms</b>	PLA2G2A; phospholipase A2, group IIA (platelets, synovial fluid); PLA2B, PLA2L; phospholipase A2, membrane associated; NPS-PLA2; GIIC sPLA2; group IIA phospholipase A2; phosphatidylcholine 2-acylhydrolase 2A; non-pancreatic secretory phospholipase A2; MOM1; PLA2; PLA2B; PLA2L; PLA2S; PLAS1; sPLA2;
<b>Gene ID</b>	5320
<b>mRNA Refseq</b>	<a href="#">NM_000300</a>
<b>protein Refseq</b>	NP_000291
<b>MIM</b>	172411

 Tel: 1-631-559-9269 1-516-512-3133

 Email: [info@creative-biomart.com](mailto:info@creative-biomart.com)  Fax: 1-631-938-8127

 45-1 Ramsey Road, Shirley, NY 11967, USA

SDS-PAGE



 Tel: 1-631-559-9269 1-516-512-3133

 Email: [info@creative-biomart.com](mailto:info@creative-biomart.com)  Fax: 1-631-938-8127

 45-1 Ramsey Road, Shirley, NY 11967, USA