

Recombinant Human PLA2G2D Protein

Cat. No. PLA2G2D-8493H Lot. No. (See product label)

SPECIFICATION

Product Overview	Recombinant Human PLA2G2D was produced in E. coli.
Species	Human
Source	E.coli
Description	This gene encodes a secreted member of the phospholipase A2 family, and is found in a cluster of related family members on chromosome 1. Phospholipase A2 family members hydrolyze the sn-2 fatty acid ester bond of glycerophospholipids to produce lysophospholipids and free fatty acid. This gene may be involved in inflammation and immune response, and in weight loss associated with chronic obstructive pulmonary disease. Alternative splicing results in multiple transcript variants encoding different isoforms.
Form	20 mM Tris-HCl, 100mM NaCl, PH8.0
Molecular Mass	~16.5 kDa
AA sequence	MRGSHHHHHHGMASHMGILNLNKMKVQVTGKMPILSYWPYGCHCGLGGRGQPKD ATDWCC QTHDCCYDHLKTQGCSIYKDYRYNFSQGNIHCSDKGSWCEQQLCACD KEVAFCLKRNLD TYQKRLRFYWRPHCRGQTPGC
Endotoxin	< 1.0 EU per µg of the protein as determined by the LAL method
Purity	>95% by SDS-PAGE

 Tel: 1-631-559-9269 1-516-512-3133

 Email: info@creative-biomart.com  Fax: 1-631-938-8127

 45-1 Ramsey Road, Shirley, NY 11967, USA

GENE INFORMATION

Gene Name PLA2G2D phospholipase A2, group IID [Homo sapiens]

Official Symbol PLA2G2D

Synonyms PLA2G2D; phospholipase A2, group IID; group IID secretory phospholipase A2; sPLA2S; PLA2IID; sPLA2-IID; GIID sPLA2; secretory phospholipase A2s; phosphatidylcholine 2-acylhydrolase 2D; secretory-type PLA, stroma-associated homolog; SPLASH;

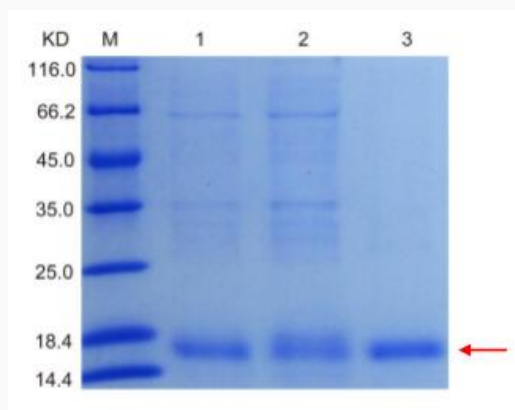
Gene ID 26279

mRNA Refseq NM_012400

Protein Refseq NP_036532

MIM 605630

UniProt ID Q9UNK4



Tel: 1-631-559-9269 1-516-512-3133

Email: info@creative-biomart.com Fax: 1-631-938-8127

45-1 Ramsey Road, Shirley, NY 11967, USA



Fig.1. SDS-PAGE analysis of PLA2G2D inclusion bodies purification
Lane M: Protein Marker, Lane 1: Un-purified, Lane 2: Flow through, Lane 3: Elution

 Tel: 1-631-559-9269 1-516-512-3133

 Email: info@creative-biomart.com  Fax: 1-631-938-8127

 45-1 Ramsey Road, Shirley, NY 11967, USA