

Recombinant Human PLA2G4A Protein (Met1-Ser178), N-His tagged

Cat. No. PLA2G4A-4924H Lot. No. (See product label)

SPECIFICATION

Product Overview	Recombinant human PLA2G4A (Met1-Ser178) fused with the N-His tag was expressed in E. coli.
Species	Human
Source	E.coli
ProteinLength	Met1-Ser178
Form	Lyophilized powder/frozen liquid
Molecular Mass	22.99 kDa
Purity	>90% as determined by SDS-PAGE.
Notes	For research use only.
Storage	Use a manual defrost freezer and avoid repeated freeze thaw cycles. Store at 2 to 8 centigrade for one week. Store at -20 to -80 centigrade for twelve months from the date of receipt.
Storage Buffer	0.01M PBS, pH 7.4, 0.02% NLS
Reconstitution	Reconstitute in sterile water for a stock solution.

 Tel: 1-631-559-9269 1-516-512-3133

 Email: info@creative-biomart.com  Fax: 1-631-938-8127

 45-1 Ramsey Road, Shirley, NY 11967, USA

Shipping They are shipped out with dry ice/blue ice unless customers require otherwise.

GENE INFORMATION

Gene Name PLA2G4A phospholipase A2, group IVA (cytosolic, calcium-dependent) [Homo sapiens (human)]

Official Symbol PLA2G4A

Synonyms PLA2G4A; phospholipase A2, group IVA (cytosolic, calcium-dependent); PLA2G4; cytosolic phospholipase A2; cPLA2 alpha; cPLA2; lysophospholipase; phospholipase A2 group IVA; phosphatidylcholine 2-acylhydrolase; calcium-dependent phospholipid-binding protein; cPLA2-alpha; MGC126350;

Gene ID 5321

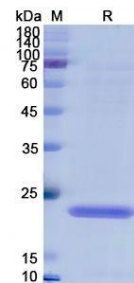
mRNA Refseq NM_024420

Protein Refseq NP_077734

MIM 600522

UniProt ID P47712

SDS-PAGE



 Tel: 1-631-559-9269 1-516-512-3133

 Email: info@creative-biomart.com  Fax: 1-631-938-8127

 45-1 Ramsey Road, Shirley, NY 11967, USA