

## Recombinant Human PLA2G4D protein, His & GST-tagged

Cat. No. PLA2G4D-1421H Lot. No. (See product label)

### SPECIFICATION

|                         |  |
|-------------------------|--|
| <b>Product Overview</b> | Recombinant Human PLA2G4D aa. (Pro9~Leu120 (Accession # Q86XP0)) fused with N-terminal His & GST tag was produced in E. coli cells.  |
| <b>Species</b>          | Human  |
| <b>Source</b>           | E.coli   |
| <b>ProteinLength</b>    | Pro9~Leu120  |
| <b>Description</b>      | The phospholipase A2 enzyme family, including PLA2G4D, catalyze the hydrolysis of glycerophospholipids at the sn-2 position and then liberate free fatty acids and lysophospholipids (Chiba et al., 2004 [PubMed 14709560]). |
| <b>Form</b>             | Freeze-dried powder  |
| <b>Molecular Mass</b>   | Predicted Molecular Mass: 42.8kDa  |
| <b>Endotoxin</b>        | <1.0EU per 1ug (determined by the LAL method)  |
| <b>Purity</b>           | >90%   |
| <b>Applications</b>     | SDS-PAGE; WB; ELISA; IP.   |
| <b>Stability</b>        | The thermal stability is described by the loss rate. The loss rate was determined by accelerated thermal degradation test, that is, incubate the protein at 37°C for 48h,  |

 Tel: 1-631-559-9269 1-516-512-3133

 Email: [info@creative-biomart.com](mailto:info@creative-biomart.com)  Fax: 1-631-938-8127

 45-1 Ramsey Road, Shirley, NY 11967, USA

and no obvious degradation and precipitation were observed. The loss rate is less than 5% within the expiration date under appropriate storage condition.

**Storage**

Avoid repeated freeze/thaw cycles. Store at 2-8°C for one month. Aliquot and store at -80°C for 12 months.

**Storage buffer**

Supplied as lyophilized form in PBS, pH7.4, containing 5% trehalose, 0.01% sarcosyl.

**Reconstitution**

Reconstitute in sterile PBS, pH7.2-pH7.4.

**Isoelectric Point**

4.7

## GENE INFORMATION

**Gene Name**

PLA2G4D phospholipase A2 group IVD [ Homo sapiens (human) ]

**Official Symbol**

PLA2G4D

**Synonyms**

PLA2G4D; phospholipase A2 group IVD; cPLA2delta; cytosolic phospholipase A2 delta; cPLA2-delta; phospholipase A2 delta, cytosolic; phospholipase A2, group IVD (cytosolic)

**Gene ID**

283748

**mRNA Refseq**

NM\_178034.3

**Protein Refseq**

NP\_828848.3

**UniProt ID**

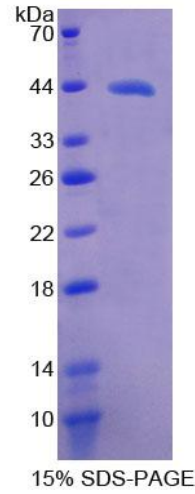
Q86XP0

 Tel: 1-631-559-9269 1-516-512-3133

 Email: [info@creative-biomart.com](mailto:info@creative-biomart.com)  Fax: 1-631-938-8127

 45-1 Ramsey Road, Shirley, NY 11967, USA

**SDS-PAGE**



 Tel: 1-631-559-9269 1-516-512-3133

 Email: [info@creative-biomart.com](mailto:info@creative-biomart.com)  Fax: 1-631-938-8127

 45-1 Ramsey Road, Shirley, NY 11967, USA