

## Recombinant Human PLA2G5 Protein (21-138 aa), His-tagged

Cat. No. PLA2G5-1487H Lot. No. (See product label)

### SPECIFICATION

<b>Product Overview</b>	Recombinant Human PLA2G5 Protein (21-138 aa) is produced by Yeast expression system. This protein is fused with a 6xHis tag at the N-terminal. Research Area: Cardiovascular. Protein Description: Full Length of Mature Protein.
<b>Species</b>	Human
<b>Source</b>	Yeast
<b>ProteinLength</b>	21-138 aa
<b>Description</b>	PA2 catalyzes the calcium-dependent hydrolysis of the 2-acyl groups in 3-sn-phospho glycerides. This isozyme hydrolyzes more efficiently L-alpha-1-palmitoyl-2-oleoyl phosphatidylcholine than L-alpha-1-palmitoyl-2-arachidonyl phosphatidylcholine, L-alpha-1-palmitoyl-2-arachidonyl phosphatidylethanolamine, or L-alpha-1-stearoyl-2-arachidonyl phosphatidylinositol. May be involved in the production of lung surfactant, the remodeling or regulation of cardiac muscle.
<b>Form</b>	Tris-based buffer, 50% glycerol
<b>Molecular Mass</b>	15.6 kDa
<b>AA Sequence</b>	GLLDLKSMIEKVVTGKNALTNYGFGYGCYCGWGGRGTPKDGTDWCCWAHDHCYGRLEEKGCNIRTQSYKYRFAWGVVTCEPGPFCHVNLACDRKLVYCLKRNLRSYNPQYQYFPNILCS

 Tel: 1-631-559-9269 1-516-512-3133

 Email: [info@creative-biomart.com](mailto:info@creative-biomart.com)  Fax: 1-631-938-8127

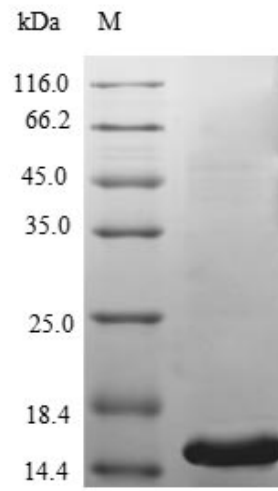
 45-1 Ramsey Road, Shirley, NY 11967, USA

<b>Purity</b>	> 90% as determined by SDS-PAGE.
<b>Notes</b>	Repeated freezing and thawing is not recommended. Store working aliquots at 4 centigrade for up to one week.
<b>Storage</b>	The shelf life is related to many factors, storage state, buffer ingredients, storage temperature and the stability of the protein itself. Generally, the shelf life of liquid form is 6 months at -20 centigrade/-80 centigrade. The shelf life of lyophilized form is 12 months at -20 centigrade/-80 centigrade.
<b>Concentration</b>	A hardcopy of COA with reconstitution instruction is sent along with the products.
<b>GENE INFORMATION</b>	
<b>Gene Name</b>	PLA2G5 phospholipase A2, group V [ Homo sapiens ]
<b>Official Symbol</b>	PLA2G5
<b>Synonyms</b>	PLA2G5; FRFB; GV-PLA2; PLA2-10; hVPLA(2); MGC46205; DKFZp686C2294;
<b>Gene ID</b>	5322
<b>mRNA Refseq</b>	NM_000929
<b>Protein Refseq</b>	NP_000920
<b>MIM</b>	601192
<b>UniProt ID</b>	P39877

 Tel: 1-631-559-9269 1-516-512-3133

 Email: [info@creative-biomart.com](mailto:info@creative-biomart.com)  Fax: 1-631-938-8127

 45-1 Ramsey Road, Shirley, NY 11967, USA



(Tris-Glycine gel) Discontinuous SDS-PAGE (reduced) with 5% enrichment gel and 15% separation gel.

 Tel: 1-631-559-9269 1-516-512-3133

 Email: [info@creative-biomart.com](mailto:info@creative-biomart.com)  Fax: 1-631-938-8127

 45-1 Ramsey Road, Shirley, NY 11967, USA