

## Recombinant Human PLA2G5 Protein

Cat. No. PLA2G5-44H Lot. No. (See product label)

### SPECIFICATION

<b>Product Overview</b>	Recombinant human PLA2G5 protein without tag was expressed in E. coli.
<b>Species</b>	Human
<b>Source</b>	E.coli
<b>Description</b>	<p>This gene is a member of the secretory phospholipase A2 family. It is located in a tightly-linked cluster of secretory phospholipase A2 genes on chromosome 1. The encoded enzyme catalyzes the hydrolysis of membrane phospholipids to generate lysophospholipids and free fatty acids including arachidonic acid. It preferentially hydrolyzes linoleoyl-containing phosphatidylcholine substrates. Secretion of this enzyme is thought to induce inflammatory responses in neighboring cells.</p> <p>Alternatively spliced transcript variants have been found, but their full-length nature has not been determined.</p>
<b>Molecular Mass</b>	13.72 kDa
<b>Purity</b>	≥95% estimated by SDS-PAGE
<b>Unit Definition</b>	One unit is defined as the amount of enzyme required to release 1 μmol of TNB per minute under the following condition: 25 mM Tris-HCl, pH 7.5, containing 10 mM CaCl <sub>2</sub> , 100 mM KCl, 0.3 mM Triton X-100, 1 mg/mL BSA, 500 μM 1,2-bis(heptanoylthio) Glycerophosphocholine, and 0.5 mM DTNB at 37 centigrade.
<b>Stability</b>	≥ 1 year

 Tel: 1-631-559-9269 1-516-512-3133

 Email: [info@creative-biomart.com](mailto:info@creative-biomart.com)  Fax: 1-631-938-8127

 45-1 Ramsey Road, Shirley, NY 11967, USA

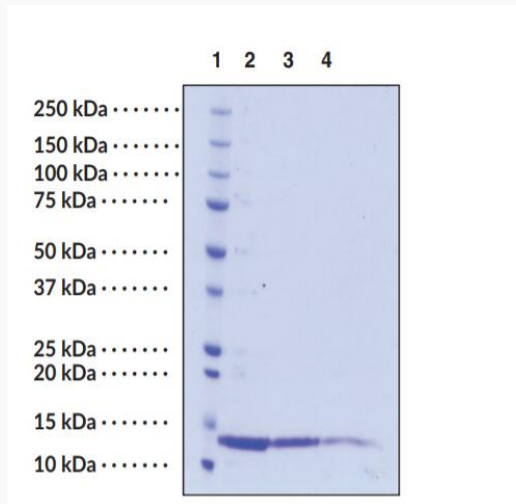
<b>Storage</b>	Store it at -80 centigrade
<b>Storage Buffer</b>	50 mM Tris-HCl, pH 8.0, containing 100 mM sodium chloride, 50 mM calcium chloride, and 20% glycerol
<b>GENE INFORMATION</b>	
<b>Gene Name</b>	PLA2G5 phospholipase A2 group V [ Homo sapiens (human) ]
<b>Official Symbol</b>	PLA2G5
<b>Synonyms</b>	PLA2G5; phospholipase A2 group V; FRFB; GV-PLA2; PLA2-10; hVPLA(2); phospholipase A2 group V; calcium-dependent phospholipase A2; Ca <sup>2+</sup> -dependent phospholipase A2; phosphatidylcholine 2-acylhydrolase 5
<b>Gene ID</b>	5322
<b>mRNA Refseq</b>	NM_000929
<b>Protein Refseq</b>	NP_000920
<b>MIM</b>	601192
<b>UniProt ID</b>	P39877

 Tel: 1-631-559-9269 1-516-512-3133

 Email: [info@creative-biomart.com](mailto:info@creative-biomart.com)  Fax: 1-631-938-8127

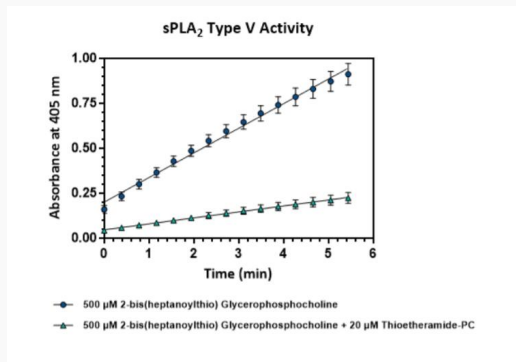
 45-1 Ramsey Road, Shirley, NY 11967, USA

**SDS-PAGE Analysis  
of PLA2G5**



Lane 1: MW Markers; Lane 2: sPLA2 Type V (4 µg); Lane 3: sPLA2 Type V (2 µg); Lane 4: sPLA2 Type V (1 µg). Representative gel image shown; actual purity may vary between each batch.

**Activity Assay**



Tel: 1-631-559-9269 1-516-512-3133

Email: [info@creative-biomart.com](mailto:info@creative-biomart.com) Fax: 1-631-938-8127

45-1 Ramsey Road, Shirley, NY 11967, USA