

Recombinant Rat PLA2G5 Protein (21-137 aa), His-SUMO-tagged

Cat. No. PLA2G5-722R Lot. No. (See product label)

SPECIFICATION

Product Overview	Recombinant Rat PLA2G5 Protein (21-137 aa) is produced by E. coli expression system. This protein is fused with a 6xHis-SUMO tag at the N-terminal. Protein Description: Full Length of Mature Protein.
Species	Rat
Source	E.coli
ProteinLength	21-137 aa
Description	PA2 catalyzes the calcium-dependent hydrolysis of the 2-acyl groups in 3-sn-phospho glycerides. This isozyme hydrolyzes L-alpha-palmitoyl-2-oleoyl phosphatidylcholine more efficiently than L-alpha-1-palmitoyl-2-arachidonyl phosphatidylcholine, L-alpha-1-palmitoyl-2-arachidonyl phosphatidylethanolamine or L-alpha-1-stearoyl-2-arachidonyl phosphatidylinositol.
Form	Tris-based buffer, 50% glycerol
Molecular Mass	29.8 kDa
AA Sequence	GLLELKSMIEKVTKNAVKNYGFYGCYCGWGGHGTPKDGTDWCCRMHDCRYGLL EEKHCAIRTSYDYRFTQDLVICEHDSFCPVRLCACDRKLVYCLRRNLWSYNRLYQ YYPNFLC

 Tel: 1-631-559-9269 1-516-512-3133

 Email: info@creative-biomart.com  Fax: 1-631-938-8127

 45-1 Ramsey Road, Shirley, NY 11967, USA

Purity	> 90% as determined by SDS-PAGE.
Notes	Repeated freezing and thawing is not recommended. Store working aliquots at 4 centigrade for up to one week.
Storage	The shelf life is related to many factors, storage state, buffer ingredients, storage temperature and the stability of the protein itself. Generally, the shelf life of liquid form is 6 months at -20 centigrade/-80 centigrade. The shelf life of lyophilized form is 12 months at -20 centigrade/-80 centigrade.
Concentration	A hardcopy of COA with concentration instruction is sent along with the products.

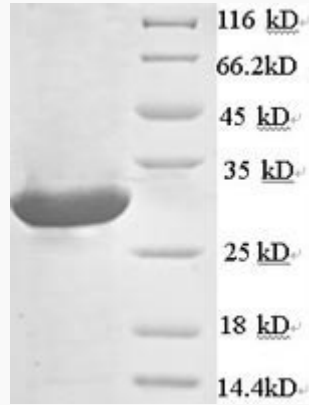
GENE INFORMATION

Gene Name	Pla2g5 phospholipase A2, group V [<i>Rattus norvegicus</i>]
Official Symbol	PLA2G5
Synonyms	PLA2G5; PLA2-10; MGC93513;
Gene ID	29354
mRNA Refseq	NM_017174
Protein Refseq	NP_058870
UniProt ID	P51433

 Tel: 1-631-559-9269 1-516-512-3133

 Email: info@creative-biomart.com  Fax: 1-631-938-8127

 45-1 Ramsey Road, Shirley, NY 11967, USA



(Tris-Glycine gel) Discontinuous SDS-PAGE (reduced) with 5% enrichment gel and 15% separation gel.

 Tel: 1-631-559-9269 1-516-512-3133

 Email: info@creative-biomart.com  Fax: 1-631-938-8127

 45-1 Ramsey Road, Shirley, NY 11967, USA