

Active Recombinant Human PLA2G7 protein, His-tagged

Cat. No. PLA2G7-1145H Lot. No. (See product label)

SPECIFICATION

Product Overview	Active Recombinant Human PLA2G7 protein(Q13093-1) precursor (Met 1-Asn 441) was expressed in HEK293, with a C-terminal polyhistidine tag.
Species	Human
Source	HEK293
ProteinLength	1-441 aa
Form	Lyophilized from sterile 50mM NaAc, 150mM NaCl, 10% glycerol, pH 5.0.
Bio-activity	Measured by its ability to cleave a colorimetric peptide substrate, 1O-hexadecyl-2-deoxy-2-thio Sacetylsnglycerol-3-phosphoryl choline (2-Thio-PAF), in the presence of 5, 5'Dithiobis(2-nitrobenzoic acid) (DTNB). The specific activity is >5000 pmoles/min/μg.
Molecular Mass	The secreted recombinant human PLA2G7 comprises 431 amino acids with a predicted molecular mass of 49.2 kDa. As a result of glycosylation, it migrates as an approximately 50-55 kDa band in SDS-PAGE under reducing conditions.
Endotoxin	< 1.0 EU per μg of the protein as determined by the LAL method.
Purity	> 88 % as determined by SDS-PAGE
Storage	Store it under sterile conditions at -20°C to -80°C upon receiving. Recommend to

 Tel: 1-631-559-9269 1-516-512-3133

 Email: info@creative-biomart.com  Fax: 1-631-938-8127

 45-1 Ramsey Road, Shirley, NY 11967, USA

aliquot the protein into smaller quantities for optimal storage. Avoid repeated freeze-thaw cycles.

Reconstitution

It is recommended that sterile water be added to the vial to prepare a stock solution of 0.2 ug/ul. Centrifuge the vial at 4°C before opening to recover the entire contents.

GENE INFORMATION

Gene Name

PLA2G7 phospholipase A2, group VII (platelet-activating factor acetylhydrolase, plasma) [Homo sapiens]

Official Symbol

PLA2G7

Synonyms

PLA2G7; phospholipase A2, group VII (platelet-activating factor acetylhydrolase, plasma); platelet-activating factor acetylhydrolase; LDL PLA2; PAFAH; LDL-PLA(2); gVIIA-PLA2; PAF 2-acylhydrolase; PAF acetylhydrolase; group-VIIA phospholipase A2; LDL-associated phospholipase A2; lipoprotein-associated phospholipase A2; 1-alkyl-2-acetyl-glycerophosphocholine esterase; 2-acetyl-1-alkyl-glycerophosphocholine esterase; PAFAD; LP-PLA2; LDL-PLA2;

Gene ID

7941

mRNA Refseq

NM_001168357

Protein Refseq

NP_001161829

MIM

601690

UniProt ID

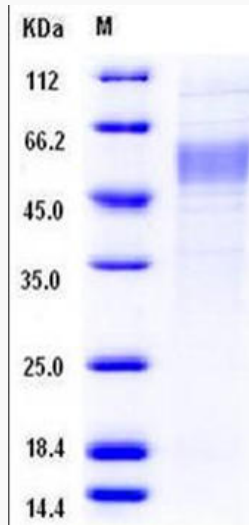
Q13093

 Tel: 1-631-559-9269 1-516-512-3133

 Email: info@creative-biomart.com  Fax: 1-631-938-8127

 45-1 Ramsey Road, Shirley, NY 11967, USA

SDS-PAGE



 Tel: 1-631-559-9269 1-516-512-3133

 Email: info@creative-biomart.com  Fax: 1-631-938-8127

 45-1 Ramsey Road, Shirley, NY 11967, USA