

Recombinant Human PLA2G7 protein, His-SUMO-tagged

Cat. No. PLA2G7-3353H Lot. No. (See product label)

SPECIFICATION

Product Overview	Recombinant Human PLA2G7 protein(Phe22~Asn441), fused with Two N-terminal Tags, His-tag and SUMO-tag, was expressed in E.coli.
Species	Human
Source	E.coli
ProteinLength	Phe22~Asn441
Form	PBS, pH7.4, containing 0.01% SKL, 1mM DTT, 5% Trehalose and Proclin300.
Molecular Mass	50kDa
Endotoxin	<1.0EU per 1g (determined by the LAL method)
Purity	> 80%
Storage	Avoid repeated freeze/thaw cycles. Store at 2-8°C for one month. Aliquot and store at -80°C for 12 months.
Reconstitution	Reconstitute in 10mM PBS (pH7.4) to a concentration of 0.1-1.0 mg/mL. Do not vortex.

GENE INFORMATION

 Tel: 1-631-559-9269 1-516-512-3133

 Email: info@creative-biomart.com  Fax: 1-631-938-8127

 45-1 Ramsey Road, Shirley, NY 11967, USA

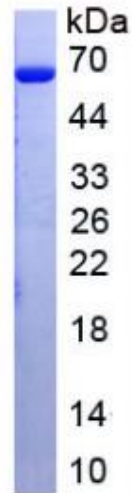
Gene Name	PLA2G7 phospholipase A2, group VII (platelet-activating factor acetylhydrolase, plasma) [Homo sapiens]
Official Symbol	PLA2G7
Synonyms	PLA2G7; phospholipase A2, group VII (platelet-activating factor acetylhydrolase, plasma); platelet-activating factor acetylhydrolase; LDL PLA2; PAFAH; LDL-PLA(2); gVIIA-PLA2; PAF 2-acylhydrolase; PAF acetylhydrolase; group-VIIA phospholipase A2; LDL-associated phospholipase A2; lipoprotein-associated phospholipase A2; 1-alkyl-2-acetyl-glycerophosphocholine esterase; 2-acetyl-1-alkyl-glycerophosphocholine esterase; PAFAD; LP-PLA2; LDL-PLA2;
Gene ID	7941
mRNA Refseq	NM_001168357
Protein Refseq	NP_001161829
MIM	601690
UniProt ID	Q13093

 Tel: 1-631-559-9269 1-516-512-3133

 Email: info@creative-biomart.com  Fax: 1-631-938-8127

 45-1 Ramsey Road, Shirley, NY 11967, USA

SDS-PAGE



 Tel: 1-631-559-9269 1-516-512-3133

 Email: info@creative-biomart.com  Fax: 1-631-938-8127

 45-1 Ramsey Road, Shirley, NY 11967, USA