

Recombinant Human PLA2G7 Protein (Met1-Asn441), C-His tagged

Cat. No. PLA2G7-5177H Lot. No. (See product label)

SPECIFICATION

Product Overview	Recombinant human PLA2G7 (Met1~Asn441) fused with the C-terminal His tag was expressed in Mammalian cells.
Species	Human
Source	Mammalian Cells
ProteinLength	Met1-Asn441
Form	Lyophilized powder/frozen liquid
Molecular Mass	50.94 kDa
Purity	>90% as determined by SDS-PAGE.
Notes	For research use only.
Storage	Use a manual defrost freezer and avoid repeated freeze thaw cycles. Store at 2 to 8 centigrade for one week. Store at -20 to -80 centigrade for twelve months from the date of receipt.
Storage Buffer	Supplied as solution form in PBS, pH 7.5 or lyophilized from PBS, pH 7.5.
Reconstitution	Reconstitute in sterile water for a stock solution.

 Tel: 1-631-559-9269 1-516-512-3133

 Email: info@creative-biomart.com  Fax: 1-631-938-8127

 45-1 Ramsey Road, Shirley, NY 11967, USA

Shipping They are shipped out with dry ice/blue ice unless customers require otherwise.

GENE INFORMATION

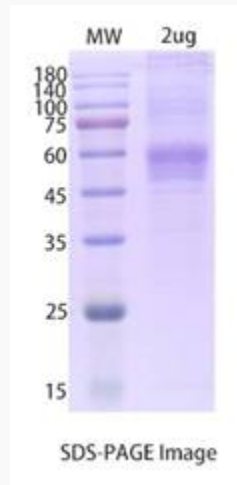
Gene Name	PLA2G7 phospholipase A2, group VII (platelet-activating factor acetylhydrolase, plasma) [Homo sapiens (human)]
Official Symbol	PLA2G7
Synonyms	PLA2G7; phospholipase A2, group VII (platelet-activating factor acetylhydrolase, plasma); platelet-activating factor acetylhydrolase; LDL PLA2; PAFAH; LDL-PLA (2); gVIIA-PLA2; PAF 2-acylhydrolase; PAF acetylhydrolase; group-VIIA phospholipase A2; LDL-associated phospholipase A2; lipoprotein-associated phospholipase A2; 1-alkyl-2-acetyl-glycerophosphocholine esterase; 2-acetyl-1-alkyl-glycerophosphocholine esterase; PAFAD; LP-PLA2; LDL-PLA2;
Gene ID	7941
mRNA Refseq	NM_001168357
Protein Refseq	NP_001161829
MIM	601690
UniProt ID	Q13093

 Tel: 1-631-559-9269 1-516-512-3133

 Email: info@creative-biomart.com  Fax: 1-631-938-8127

 45-1 Ramsey Road, Shirley, NY 11967, USA

SDS-PAGE



 Tel: 1-631-559-9269 1-516-512-3133

 Email: info@creative-biomart.com  Fax: 1-631-938-8127

 45-1 Ramsey Road, Shirley, NY 11967, USA