

Recombinant Human PLA2G7 Protein (Met33-Asn441), N-His tagged

Cat. No. PLA2G7-5179H Lot. No. (See product label)

SPECIFICATION

Product Overview	Recombinant human LpPLA2 / PLA2G7 / PAF-AH (Met33-Asn441) fused with the N-His tag was expressed in E. coli.
Species	Human
Source	E.coli
ProteinLength	Met33-Asn441
Form	Lyophilized powder/frozen liquid
Molecular Mass	48.68 kDa
Purity	>90% as determined by SDS-PAGE.
Notes	For research use only.
Storage	Use a manual defrost freezer and avoid repeated freeze thaw cycles. Store at 2 to 8 centigrade for one week. Store at -20 to -80 centigrade for twelve months from the date of receipt.
Storage Buffer	0.01M PBS, pH 7.4, 0.02% NLS
Reconstitution	Reconstitute in sterile water for a stock solution.

 Tel: 1-631-559-9269 1-516-512-3133

 Email: info@creative-biomart.com  Fax: 1-631-938-8127

 45-1 Ramsey Road, Shirley, NY 11967, USA

Shipping They are shipped out with dry ice/blue ice unless customers require otherwise.

GENE INFORMATION

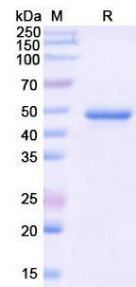
Gene Name	PLA2G7 phospholipase A2, group VII (platelet-activating factor acetylhydrolase, plasma) [Homo sapiens (human)]
Official Symbol	PLA2G7
Synonyms	PLA2G7; phospholipase A2, group VII (platelet-activating factor acetylhydrolase, plasma); platelet-activating factor acetylhydrolase; LDL PLA2; PAFAH; LDL-PLA (2); gVIIA-PLA2; PAF 2-acylhydrolase; PAF acetylhydrolase; group-VIIA phospholipase A2; LDL-associated phospholipase A2; lipoprotein-associated phospholipase A2; 1-alkyl-2-acetyl-glycerophosphocholine esterase; 2-acetyl-1-alkyl-glycerophosphocholine esterase; PAFAD; LP-PLA2; LDL-PLA2;
Gene ID	7941
mRNA Refseq	NM_001168357
Protein Refseq	NP_001161829
MIM	601690
UniProt ID	Q13093

 Tel: 1-631-559-9269 1-516-512-3133

 Email: info@creative-biomart.com  Fax: 1-631-938-8127

 45-1 Ramsey Road, Shirley, NY 11967, USA

SDS-PAGE



 Tel: 1-631-559-9269 1-516-512-3133

 Email: info@creative-biomart.com  Fax: 1-631-938-8127

 45-1 Ramsey Road, Shirley, NY 11967, USA