

Recombinant Human PLA2G7 protein, His-tagged

Cat. No. PLA2G7-5763H Lot. No. (See product label)

SPECIFICATION

Product Overview	Recombinant Human PLA2G7 protein(92-438 aa), fused with N-terminal His tag, was expressed in E.coli.
Species	Human
Source	E.coli
ProteinLength	92-438 aa
Form	The purified protein was lyophilized from sterile phosphate-buffered saline (PBS: 58 mM Na ₂ HPO ₄ , 17 mM NaH ₂ PO ₄ , 68 mM NaCl, pH 7.4). Prior to lyophilization, 5% (w/v) trehalose and 5% (w/v) mannitol were incorporated as cryoprotective excipients. The protein was eluted with a buffer containing 300 mM imidazole.
AASequence	RLDTLWIPNKEYFWGLSKFLGTHWLMGNILRLLFGSMTPANWNSPLRPGEKYPLV VFSHGLGAFRTLISAIGIDLASHGFIVAAVEHRDRSASATYYFKDQSAEIGDKSWLY LRTLKQEEETHIRNEQVRQRAKECSQALSILIDIDHKGPKVKNALDLKFDMEQLKDSID REKIAVIGHSFGGATVIQTLSEDQFRFCGIALDAWMFPLGDEVYSRIPQPLFFINSEYF QYPANIIKMKKCYSPDKERKMITIRGSVHQNFADFTFATGKIIGHMLKLGKGDIDSNAAI DLSNKASLAFQLKHLGLHKDFDQWDCLIEGDDENLIPGTNINTTNQHIMLQNSSGIE
Purity	85%, by SDS-PAGE with Coomassie Brilliant Blue staining.
Storage	Store at 2-8°C for 1-2 weeks. Aliquot and store at -20°C to -80°C for up to 3 months, reconstitution with sterile water and addition of an equal volume of glycerol. Avoid

 Tel: 1-631-559-9269 1-516-512-3133

 Email: info@creative-biomart.com  Fax: 1-631-938-8127

 45-1 Ramsey Road, Shirley, NY 11967, USA

repeat freeze-thaw cycles.

Reconstitution

Dissolve the product in 200 µl sterile water to achieve a working concentration of 0.25 g/µl. If experimental compatibility allows, mix the aqueous solution with an equal volume of glycerol (1:1 ratio) after initial reconstitution.

GENE INFORMATION

Gene Name

PLA2G7 phospholipase A2, group VII (platelet-activating factor acetylhydrolase, plasma) [Homo sapiens]

Official Symbol

PLA2G7

Synonyms

PLA2G7; phospholipase A2, group VII (platelet-activating factor acetylhydrolase, plasma); platelet-activating factor acetylhydrolase; LDL PLA2; PAFAH; LDL-PLA(2); gVIIA-PLA2; PAF 2-acylhydrolase; PAF acetylhydrolase; group-VIIA phospholipase A2; LDL-associated phospholipase A2; lipoprotein-associated phospholipase A2; 1-alkyl-2-acetyl-glycerophosphocholine esterase; 2-acetyl-1-alkyl-glycerophosphocholine esterase; PAFAD; LP-PLA2; LDL-PLA2;

Gene ID

7941

mRNA Refseq

NM_001168357

Protein Refseq

NP_001161829

MIM

601690

UniProt ID

Q13093

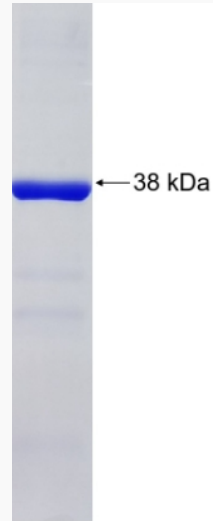
 Tel: 1-631-559-9269 1-516-512-3133

 Email: info@creative-biomart.com  Fax: 1-631-938-8127

 45-1 Ramsey Road, Shirley, NY 11967, USA



SDS-PAGE



Tel: 1-631-559-9269 1-516-512-3133

Email: info@creative-biomart.com Fax: 1-631-938-8127

45-1 Ramsey Road, Shirley, NY 11967, USA